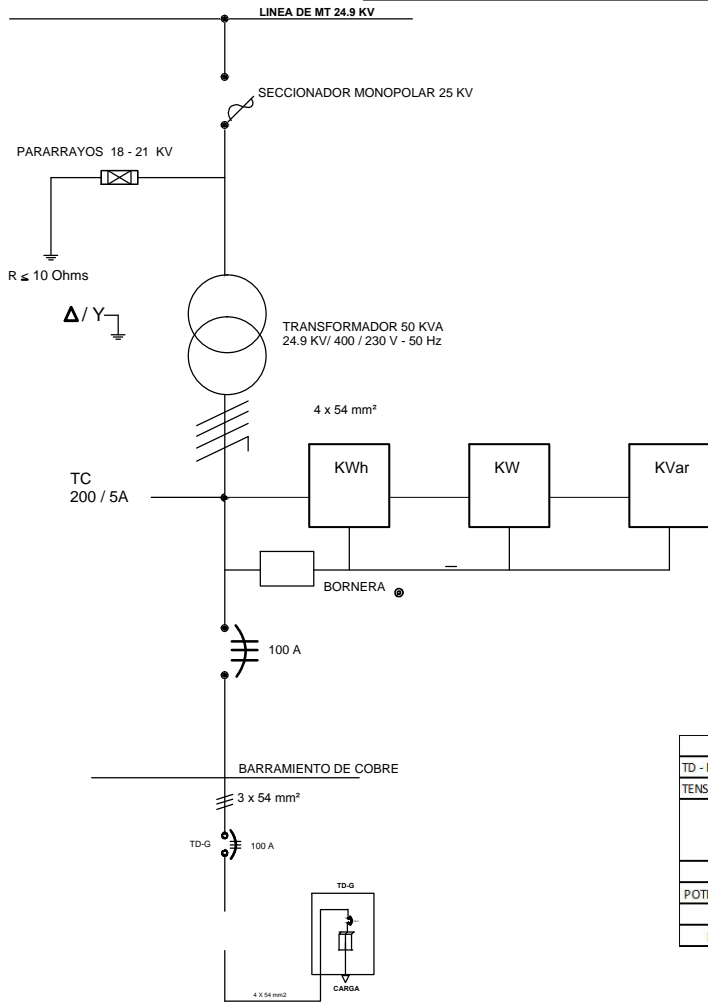


DIAGRAMA UNIFILAR ELECTRICO



PLANILLA DE CARGA												
ESTACION DE SERVICIO												
TENSION: 380/220 [V] FASE 3Ø												
MONAJE EMPOTRADO EN LA PARED												
Nº DE CIR	ILUM 100 W	ILUM 400 W	ILUM 4x18 W	TOMADO EN PISO	POTENCIA INSTALADA	CARGA (A)	CONDUCTOR (AWG)	PROTECCION TERMOMAGNETICA (A)	FASE R	FASE S	FASE T	
C1-1 TD-G	1	4	0	0	0	1700	7.75	12	10	0	0	1700
C1-2 TD-G	1	4	0	0	0	1700	7.75	12	10	1700	0	0
C1-3 TD-G	1	4	0	0	0	1700	7.75	12	10	0	0	1700
C1-4 TD-G	1	4	0	0	0	400	1.82	14	10	0	0	400
C1-5 TD-G	1	4	0	0	0	400	1.82	14	10	450	0	0
C1-6 TD-G	1	4	0	0	0	800	3.64	14	10	0	0	800
C1-7 TD-G	1	4	0	0	0	800	3.64	14	10	0	0	800
C1-8 TD-G	1	4	0	2	0	400	1.82	12	10	450	0	0
C1-9 TD-G	1	4	0	0	0	1000	4.55	12	10	0	0	1000
C1-10 TD-G	1	4	0	0	0	1000	4.55	12	10	0	0	1000
C1-11 TD-G	1	4	0	1	3	1000	4.55	12	10	1000	0	0
C1-12 TD-G	1	4	0	0	1	1000	4.55	12	10	0	0	1000
C1-13 TD-G	1	4	0	0	0	1000	4.55	12	10	0	0	1000
C1-14 TD-G	1	4	0	0	0	1200	5.45	12	10	0	0	1200
C1-15 TD-G	1	4	0	1	1	1200	5.45	12	10	0	0	1200
C1-16 TD-G	1	4	0	0	0	288	1.31	14	10	0	0	0
C1-17 TD-G	1	4	0	5	0	440	2.09	14	10	0	0	0
C1-18 TD-G	1	4	0	5	0	1000	4.55	12	10	0	0	0
C1-19 TD-G	1	4	0	4	0	800	3.64	12	10	0	0	0
C1-20 TD-G	1	4	0	0	0	1	8400	24.00	10	32	0	0
C1-21 TD-G	1	4	0	0	0	8000	3.64	12	20	3000	0	0
C1-22 TD-G	1	4	0	0	0	0	13.64	12	20	0	3000	0
C1-23 TD-G	1	4	0	0	0	0	13.64	12	20	0	0	3000
C1-24 TD-G	1	4	0	0	0	8000	3.64	12	20	0	0	8000
TOTAL						230.640	101.04	100		8800	8700	8400
						25.143.30	119	3	100			