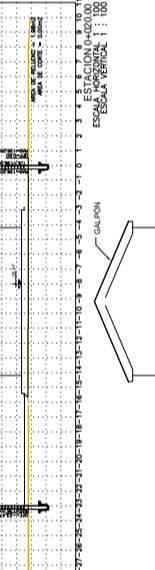
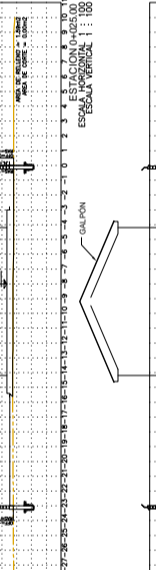
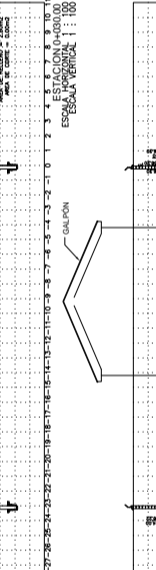
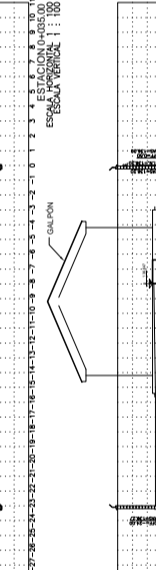
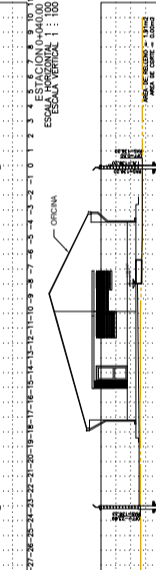
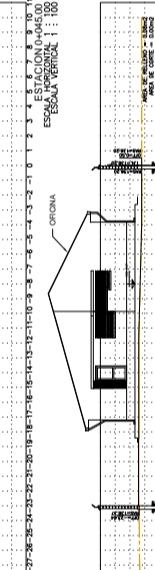
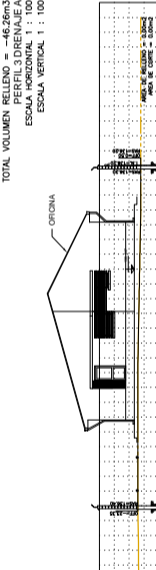
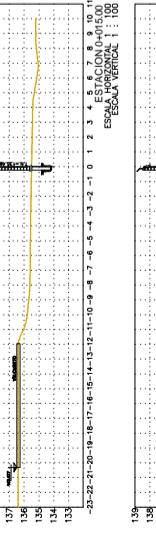
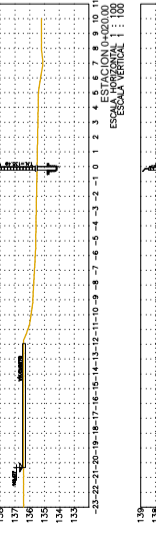
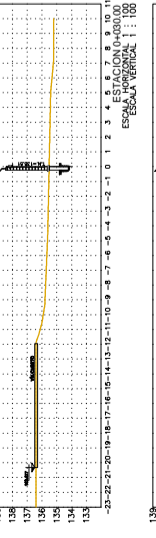
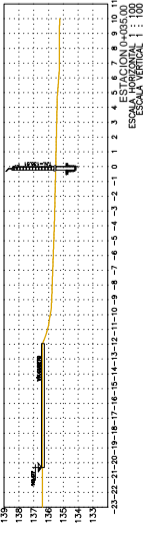
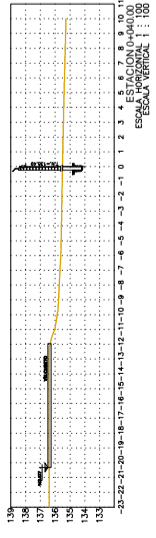
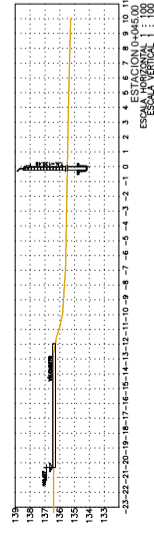
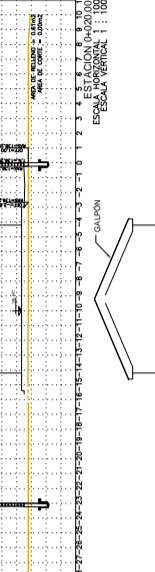
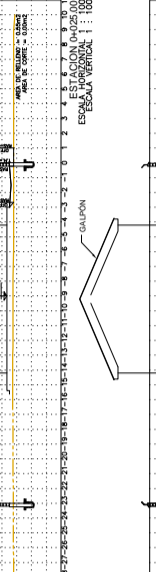
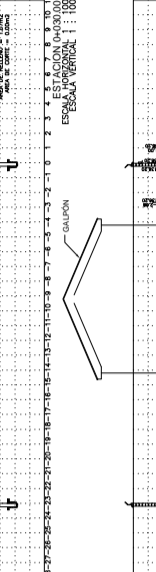
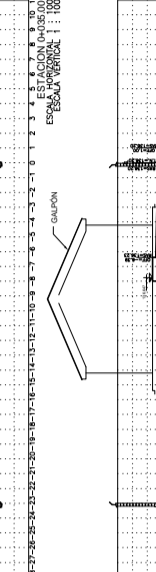
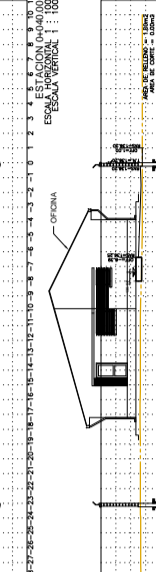
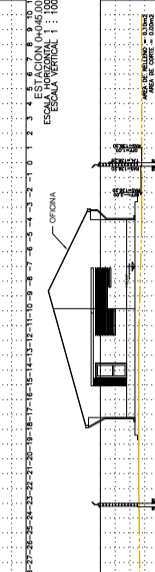


PERFIL 2 DRENAJE B

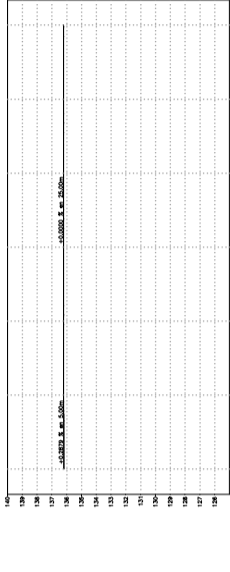
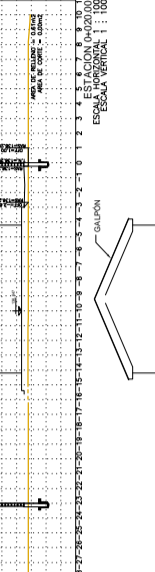
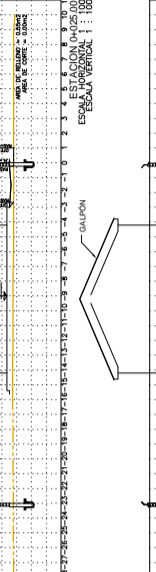
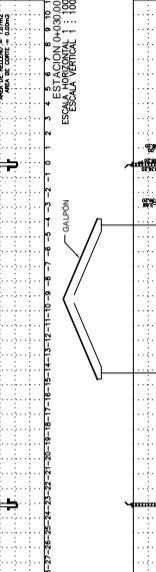
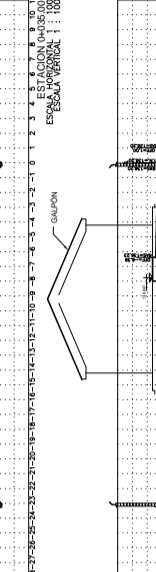
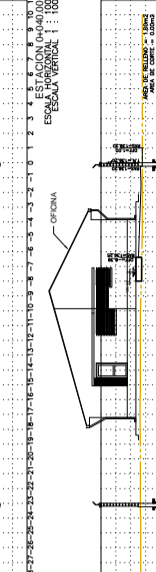
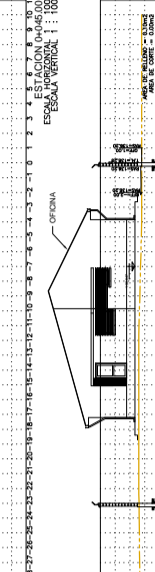


LITROS	ESPESOR	TIPO
141.0	0.05	MELLADO
142.0	0.05	MELLADO
143.0	0.05	MELLADO
144.0	0.05	MELLADO
145.0	0.05	MELLADO
146.0	0.05	MELLADO
147.0	0.05	MELLADO
148.0	0.05	MELLADO
149.0	0.05	MELLADO
150.0	0.05	MELLADO
151.0	0.05	MELLADO
152.0	0.05	MELLADO
153.0	0.05	MELLADO
154.0	0.05	MELLADO
155.0	0.05	MELLADO
156.0	0.05	MELLADO
157.0	0.05	MELLADO
158.0	0.05	MELLADO
159.0	0.05	MELLADO
160.0	0.05	MELLADO

TOTAL VOLUMEN CORTE = 0.00m³
 TOTAL VOLUMEN RELLENO = -18.58m³
 PERFILES A B
 ESCALA HORIZONTAL 1 : 100
 ESCALA VERTICAL 1 : 100

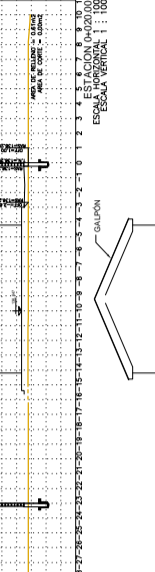
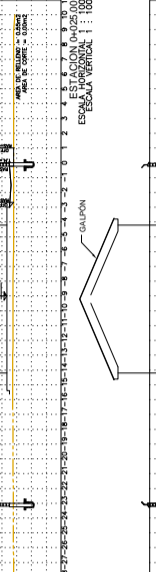
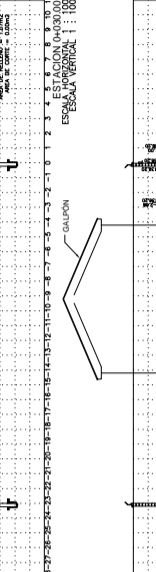
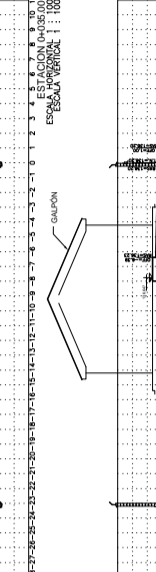
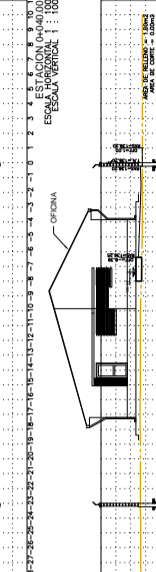
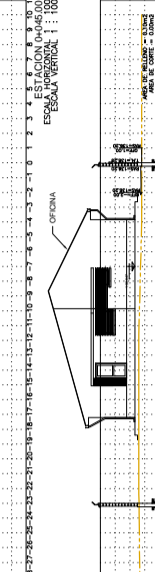


TOTAL VOLUMEN CORTE = 0.00m³
 TOTAL VOLUMEN RELLENO = -42.26m³
 PERFILES 3 DRENAJE A
 ESCALA HORIZONTAL 1 : 100
 ESCALA VERTICAL 1 : 100



LITROS	ESPESOR	TIPO
141.0	0.05	MELLADO
142.0	0.05	MELLADO
143.0	0.05	MELLADO
144.0	0.05	MELLADO
145.0	0.05	MELLADO
146.0	0.05	MELLADO
147.0	0.05	MELLADO
148.0	0.05	MELLADO
149.0	0.05	MELLADO
150.0	0.05	MELLADO
151.0	0.05	MELLADO
152.0	0.05	MELLADO
153.0	0.05	MELLADO
154.0	0.05	MELLADO
155.0	0.05	MELLADO
156.0	0.05	MELLADO
157.0	0.05	MELLADO
158.0	0.05	MELLADO
159.0	0.05	MELLADO
160.0	0.05	MELLADO

TOTAL VOLUMEN CORTE = 0.00m³
 TOTAL VOLUMEN RELLENO = -42.26m³
 PERFILES 3 DRENAJE B
 ESCALA HORIZONTAL 1 : 100
 ESCALA VERTICAL 1 : 100



UBICACIÓN:

DEPARTAMENTO	BENI
PROVINCIA	ANTONIO VACA DIEZ
MUNICIPIO	GUAYARAMERIN

PROPIETARIO:

YACIMIENTOS PETROLIFEROS FISCALES BOLIVIANOS
 GERENCIA DE REDES DE GAS Y DUCTOS
 DIRECCIÓN GAS VIRTUAL



OBRA: CONTRATACIÓN DE UNA EMPRESA PARA REALIZAR LA NIVELACIÓN DEL TERRENO Y AMPLIACIÓN DE VIAS DE CIRCULACIÓN DE LAS ES RD E COBIA RIBERALTA Y GUAYARAMERIN

DESCRIPCIÓN: PERFILES Y SECCIONES

ESPECIALIDAD: TOPOGRAFIA
 FECHA: SEPTIEMBRE 2016
 ESCALA: 1:250
 LAMINA: 3/3