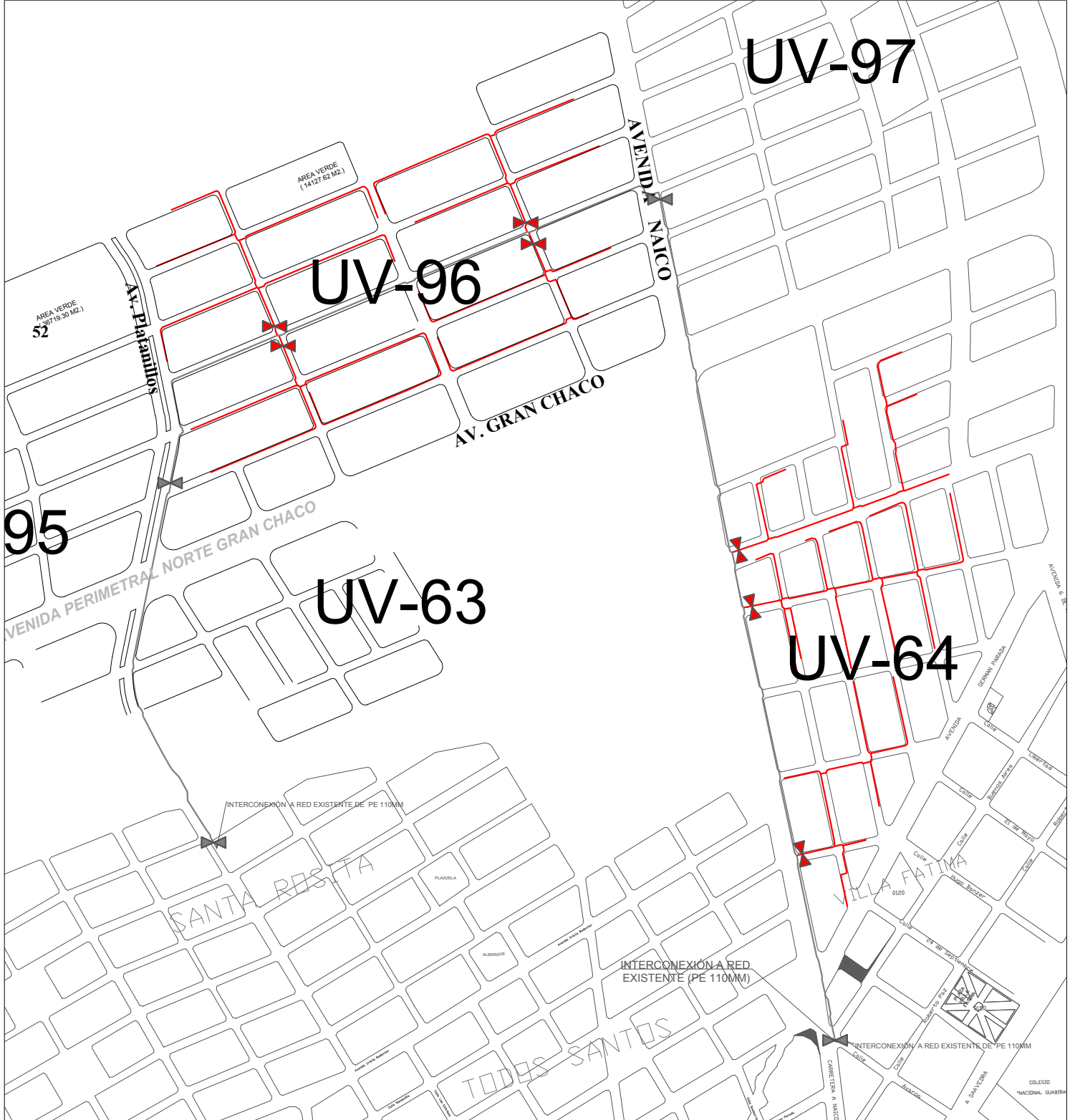


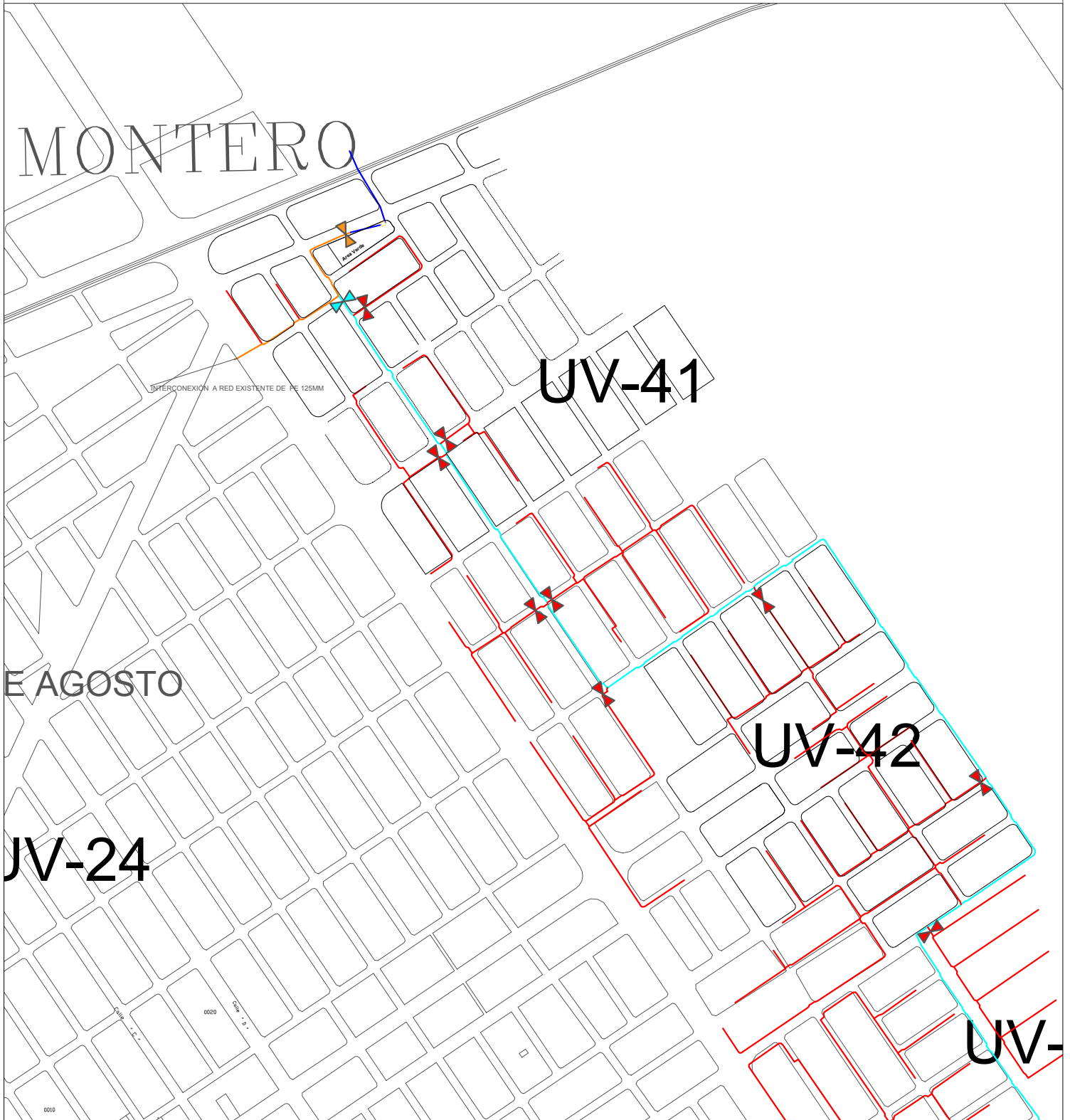


PLANO DE RED SECUNDARIA PROYECTADA (LOTE 1)
UV- 64 y UV-96



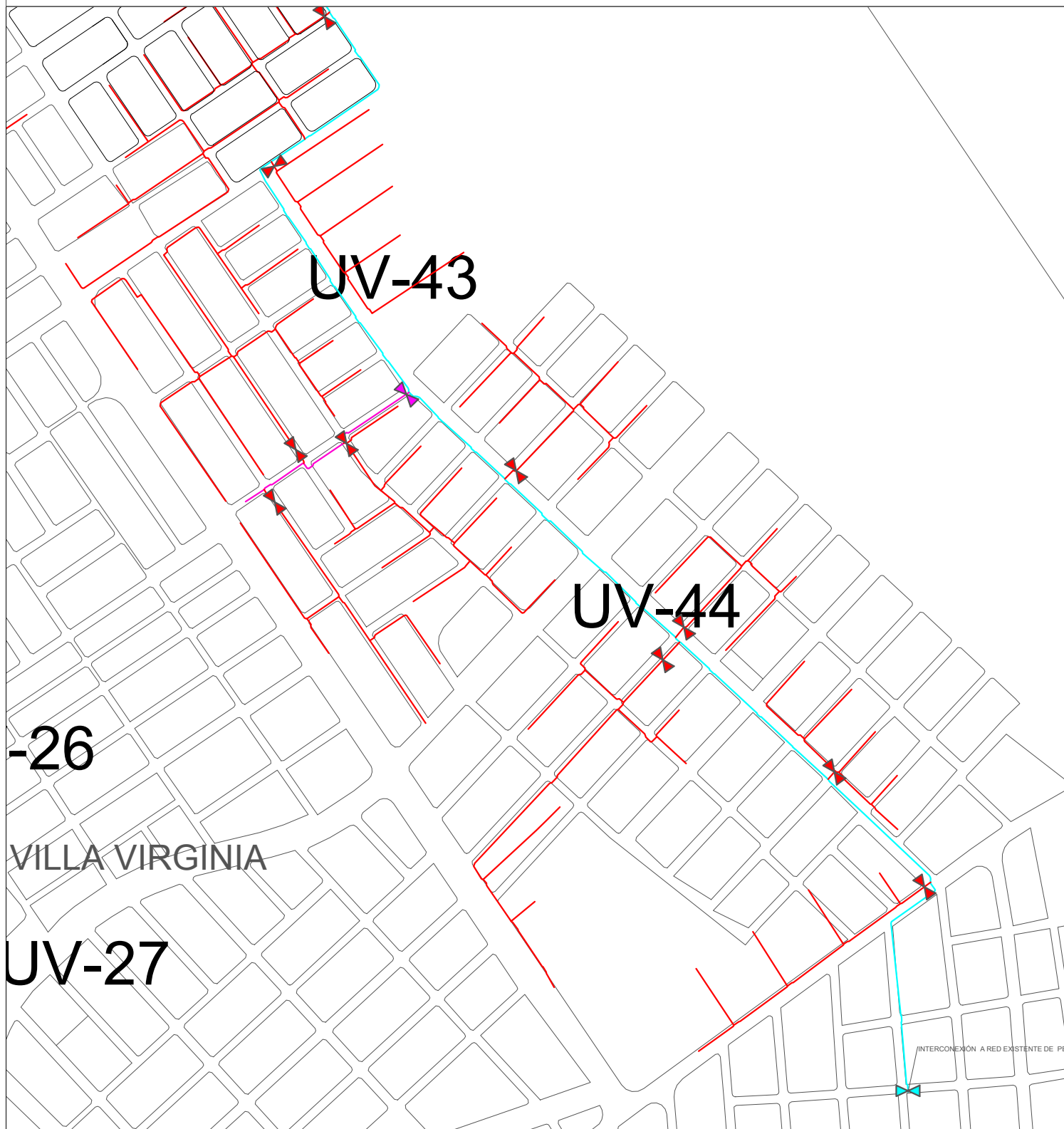


PLANO DE RED SECUNDARIA PROYECTADA (LOTE 1)
UV- 41 y UV-42



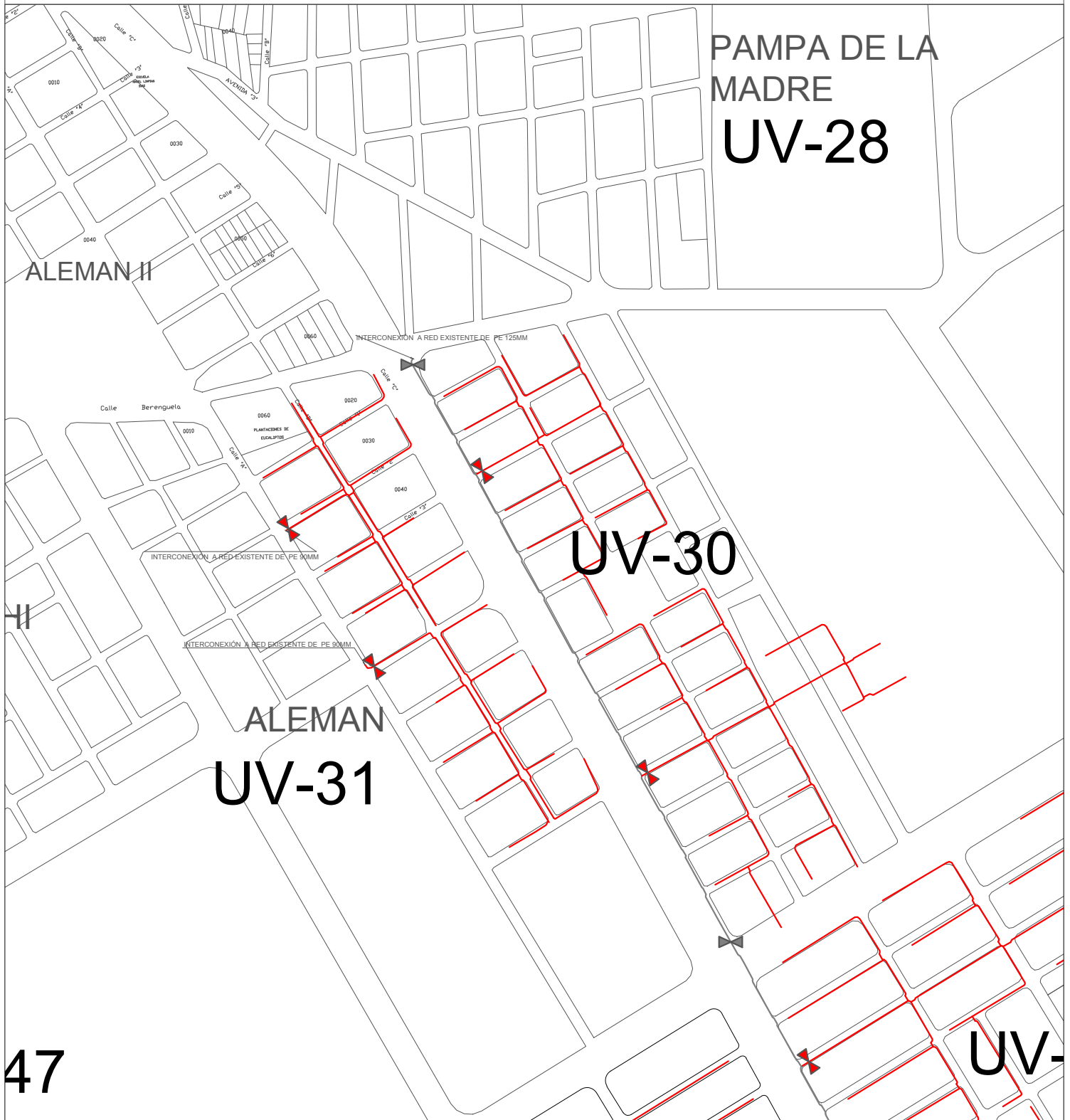


PLANO DE RED SECUNDARIA PROYECTADA (LOTE 1)
UV- 43 y UV-44



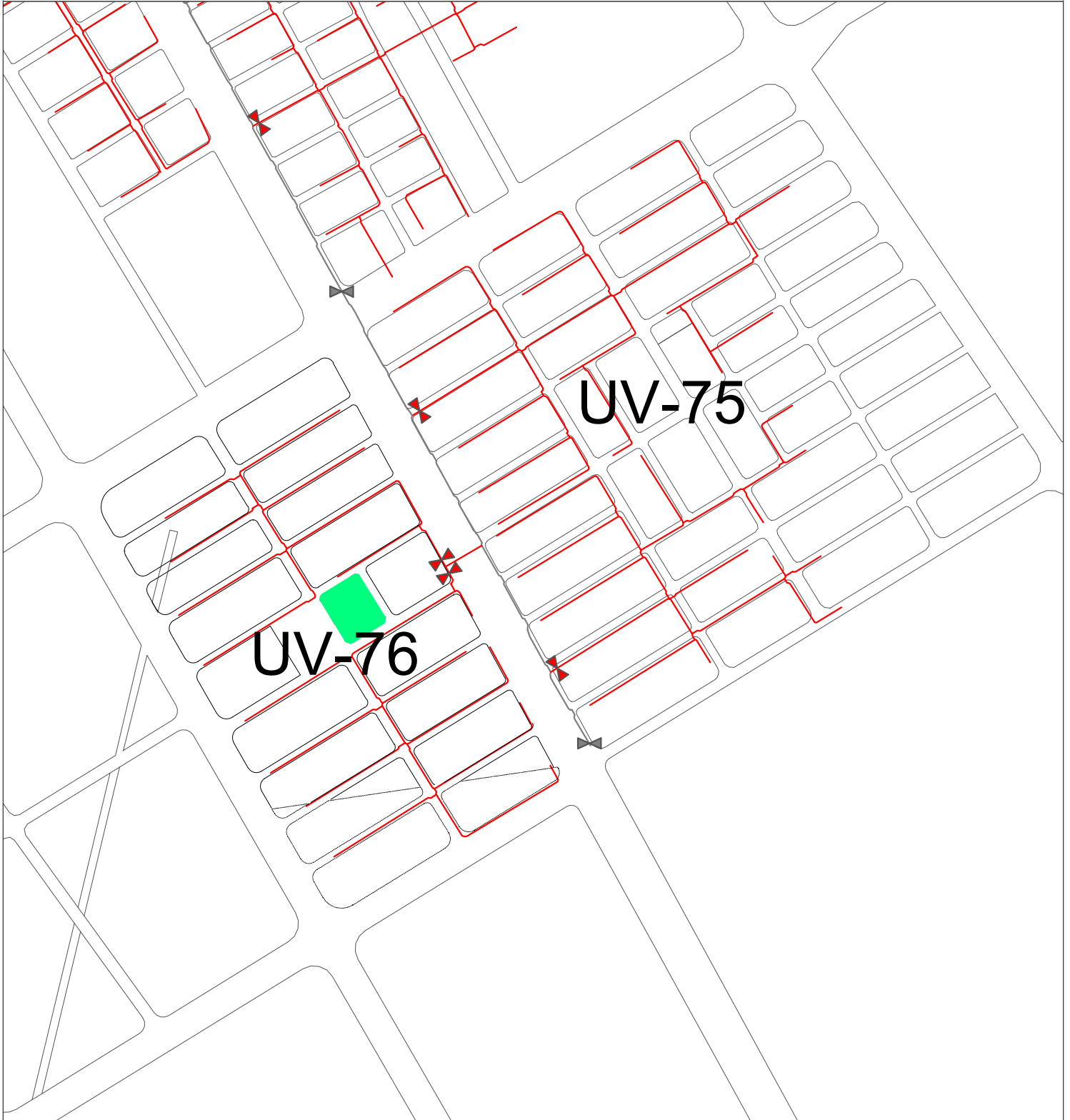


PLANO DE RED SECUNDARIA PROYECTADA (LOTE 1)
UV- 30 y UV-31





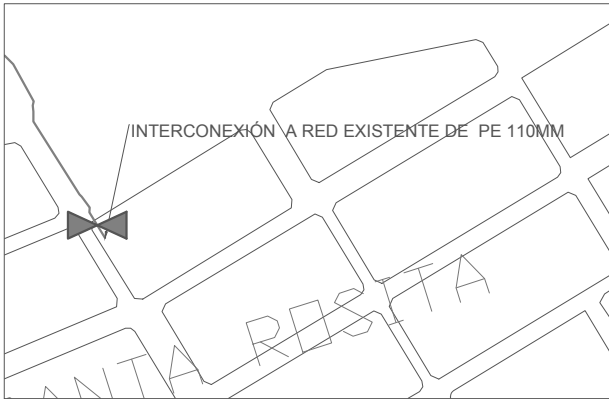
PLANO DE RED SECUNDARIA PROYECTADA (LOTE 1)
UV- 75 y UV-76



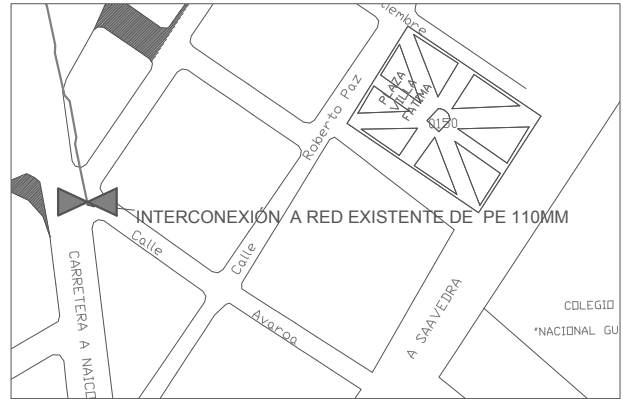


PLANO DE PUNTOS DE INTERCONEXIÓN DE RED SECUNDARIA (LOTE 1)

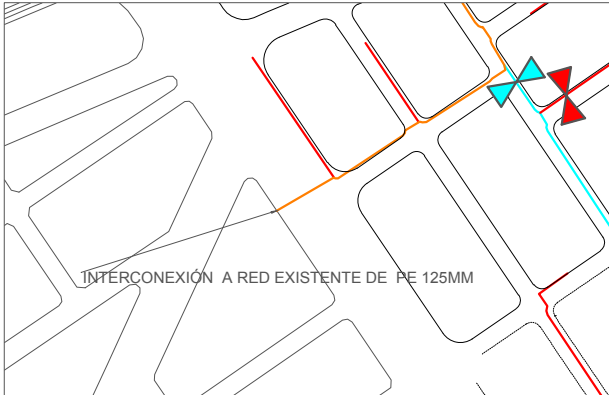
COORDENADA ESTE: 470812.87 m E
COORDENADA NORTE: 8086256.33 m S



COORDENADA ESTE: 471789.24 m E
COORDENADA NORTE: 8085950.08 m S



COORDENADA ESTE: 474044.83 m E
COORDENADA NORTE: 8085325.07 m S



COORDENADA ESTE: 476178.20 m E
COORDENADA NORTE: 8082906.56 m S



COORDENADA ESTE: 475330.58 m E
COORDENADA NORTE: 8081606.30 m S



COORDENADA ESTE: 475454.27 m E
COORDENADA NORTE: 8081407.46 m S

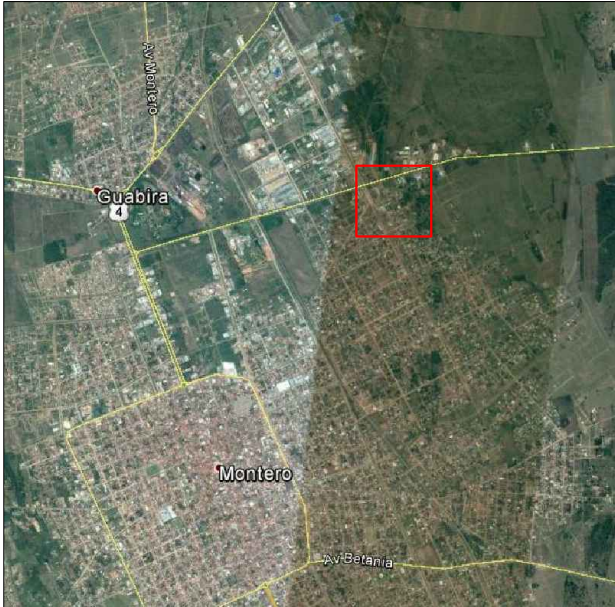
COORDENADA ESTE: 475537.73 m E
COORDENADA NORTE: 8081890.81 m S



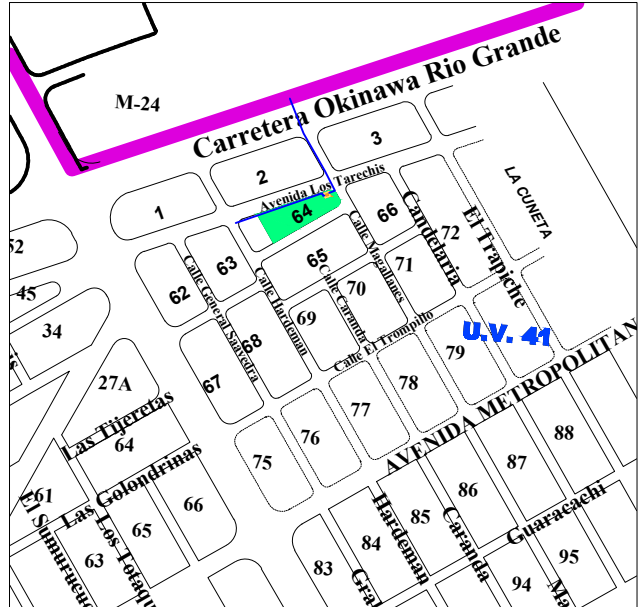


UBICACIÓN DEL TERRENO PARA EDR (LOTE 2)

VISTA SATELITAL MONTERO



U.V. 41

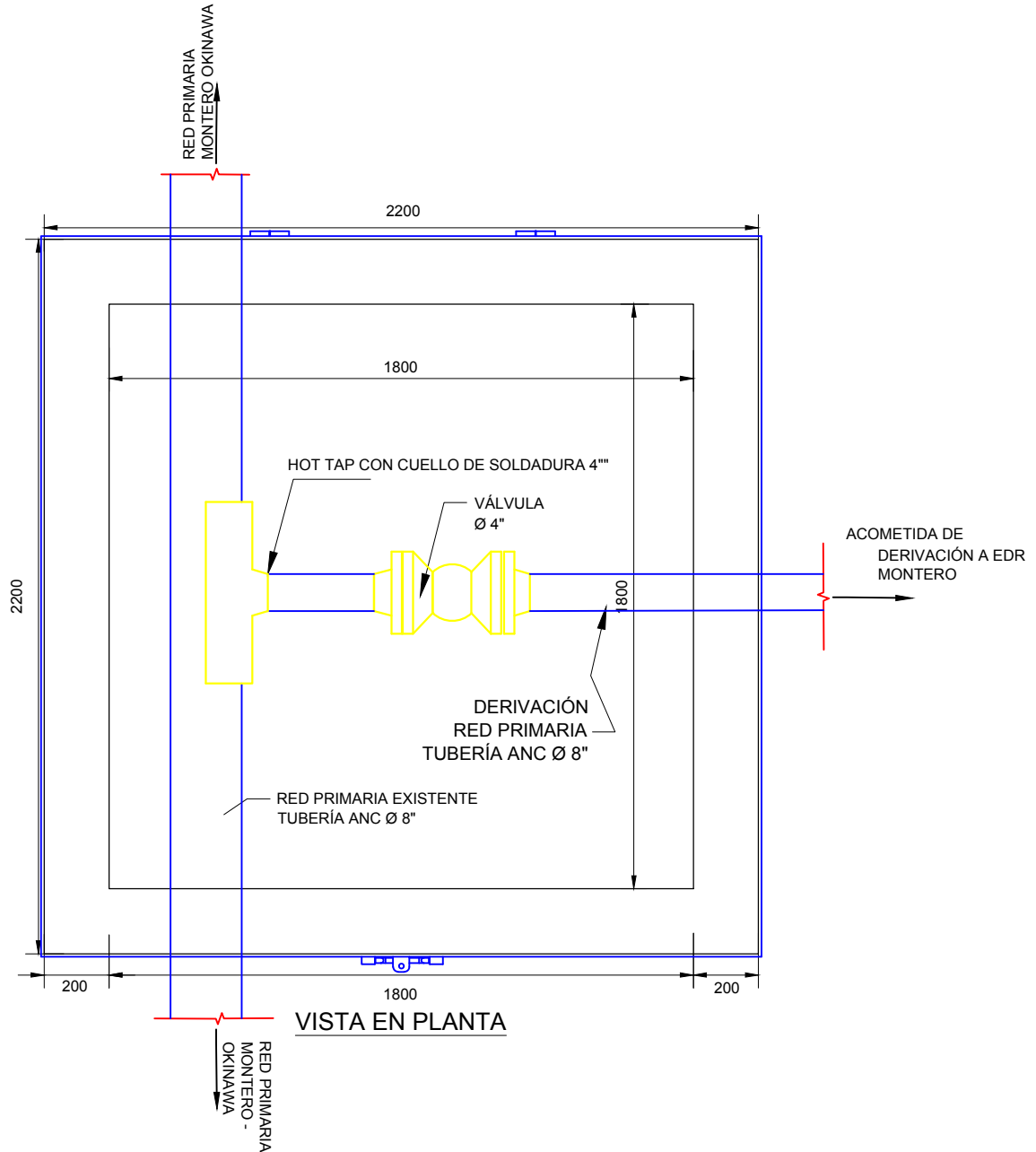


AVENIDA LOS TARECHIS, MZA. 62



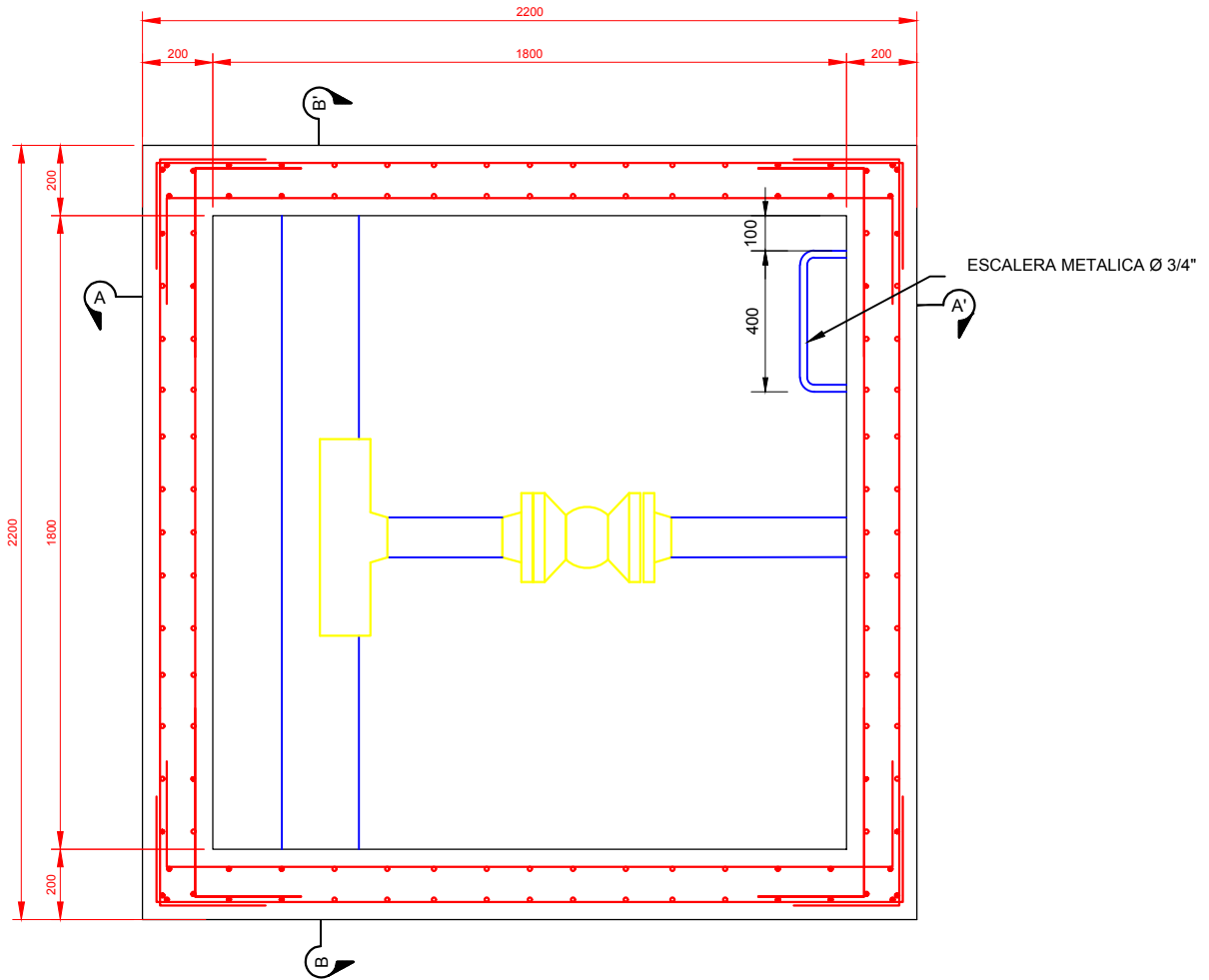


CÁMARA PARA VÁLVULA DE H°A° (LOTE 2)
VISTA EN PLANTA





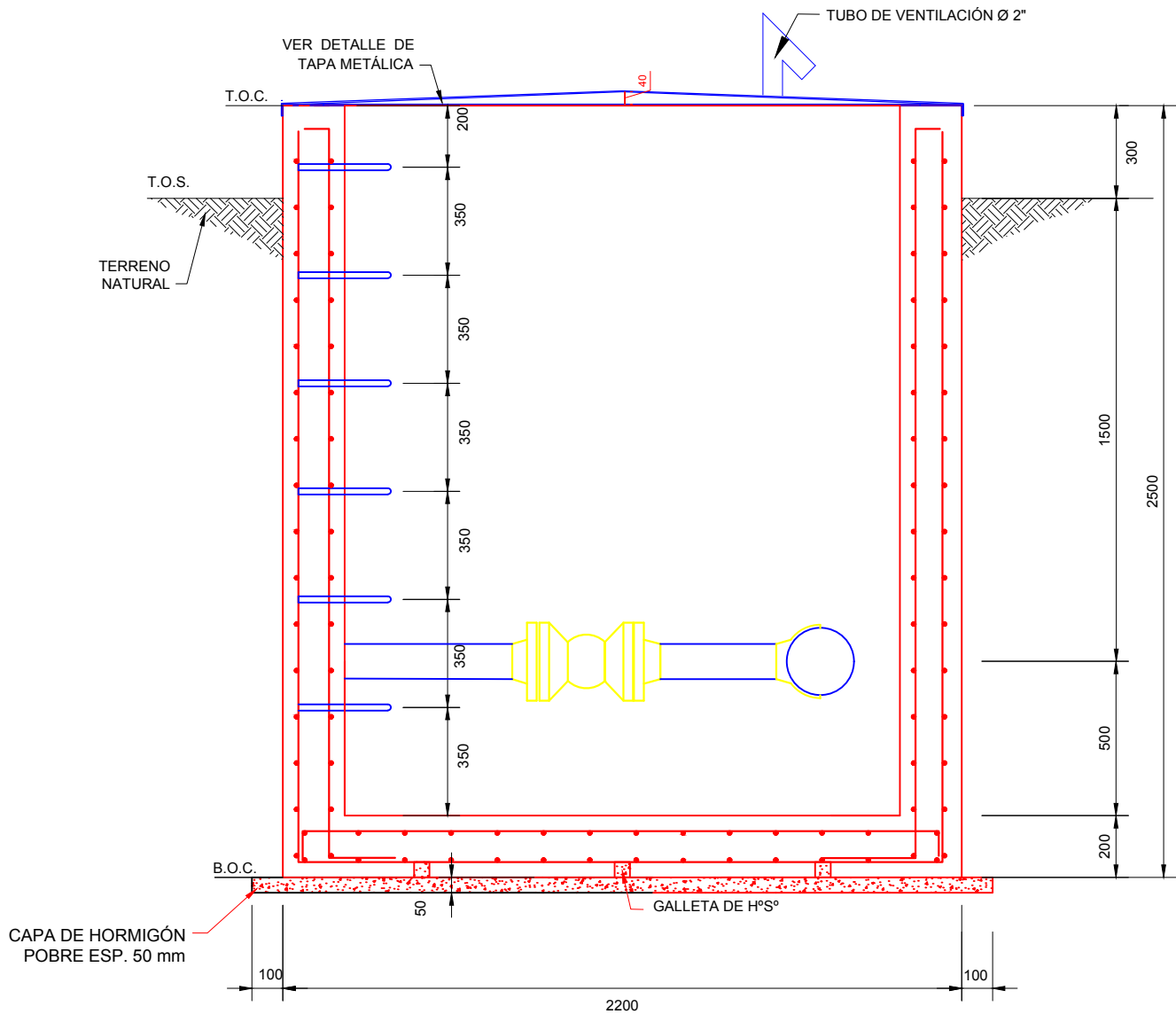
CÁMARA PARA VÁLVULA DE H°A° (LOTE 2)
DETALLE DE LA ARMADURA DE REFUERZO



DETALLE DE LA ARMADURA DE REFUERZO
(ESCALA 1:20)



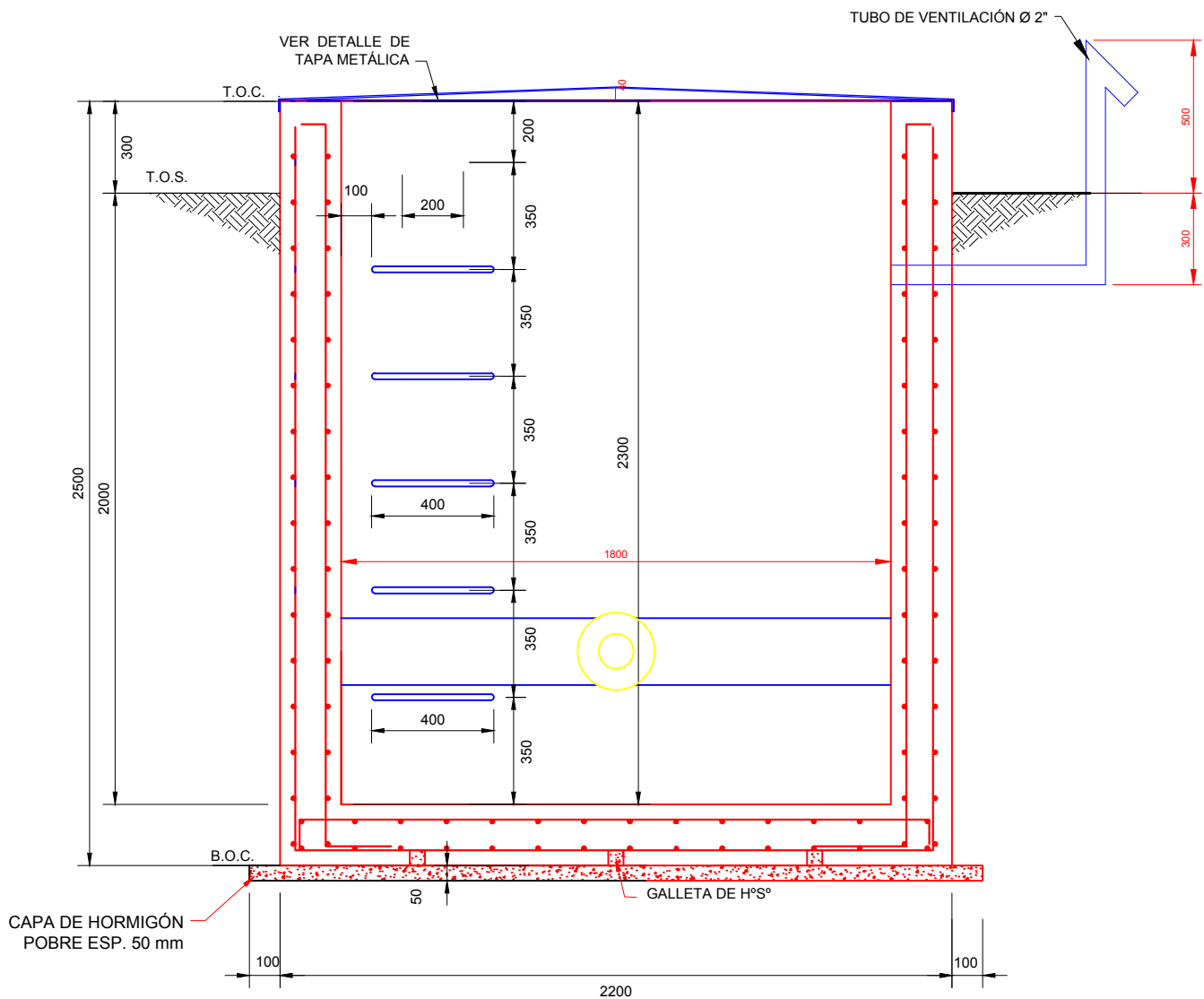
CÁMARA PARA VÁLVULA DE H°A° (LOTE 2)
SECCIÓN A-A'



SECCIÓN A-A'



CÁMARA PARA VÁLVULA DE H°A° (LOTE 2)
SECCIÓN A-A'



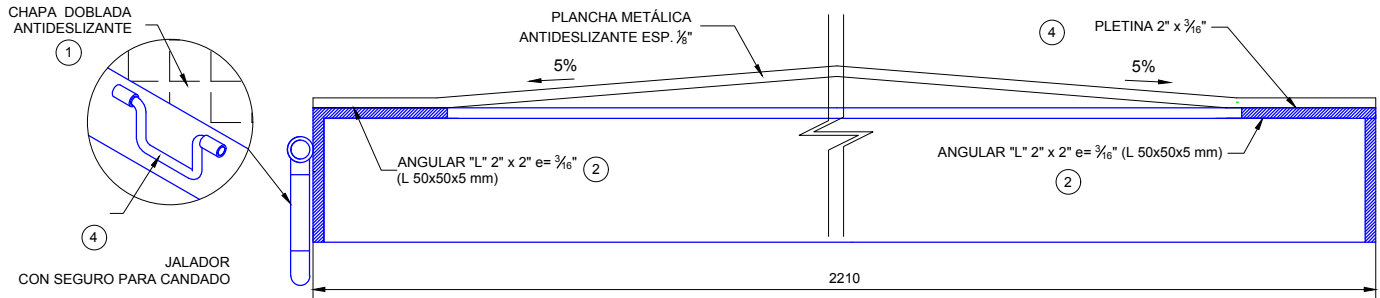
SECCIÓN A-A'



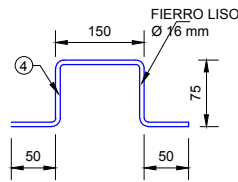
CÁMARA PARA VÁLVULA DE H^ºA^º (LOTE 2)
TAPA METALICA

LISTA DE MATERIALES DE TAPA METALICA

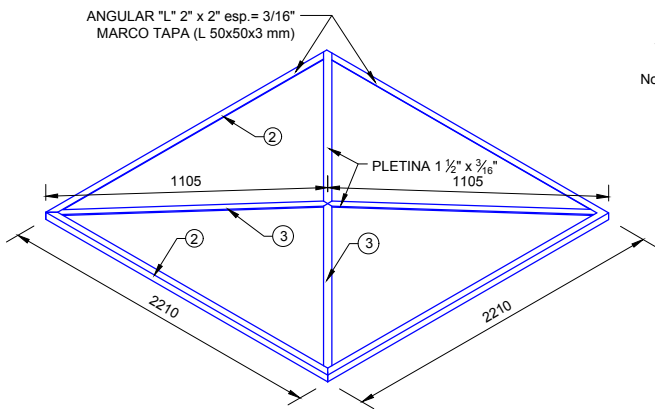
CÓD.	DESCRIPCIÓN	LONGITUD	CANTIDAD	TOTAL
1	PLANCHA ANTIDESLIZANTE (PL 2210x2210x3 mm)	-	-	4.88 m2
2	PERFIL L 2x2x3/16" (L 50 x 50 x 5 mm) BASE	1610	4	4040 mm
3	PLETINA DE ACERO ASTM A36 2" x 3/16" TAPA	2265	2	4530 mm
4	JALADOR DE FIERRO LISO Ø 1/2" (13 mm) CON SEGURO PARA CANDADO	400	1	400 mm
5	FIERRO CORRUGADO Ø 3/4"	-	-	8500 mm
6	TUBO DE VENTILACIÓN Ø 2"	750	1	1750 mm



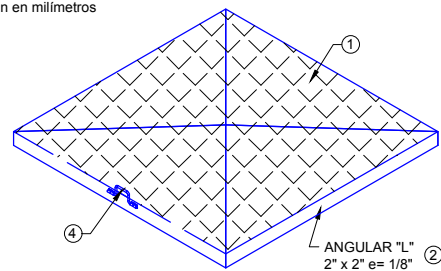
CORTE TAPA METÁLICA



Nota: Las dimensiones están en milímetros



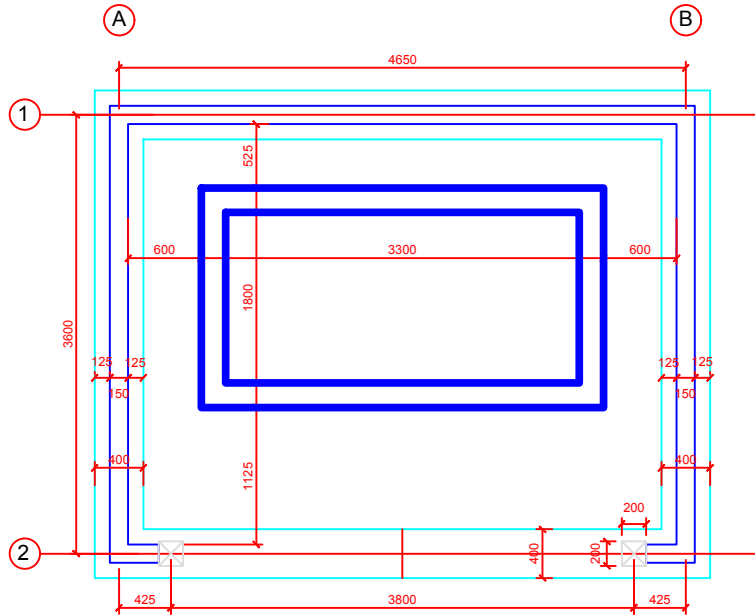
VISTA ISOMÉTRICA DE MARCO DE TAPA
(SIN ESCALA)



VISTA ISOMÉTRICA DE TAPA
SIN ESCALA

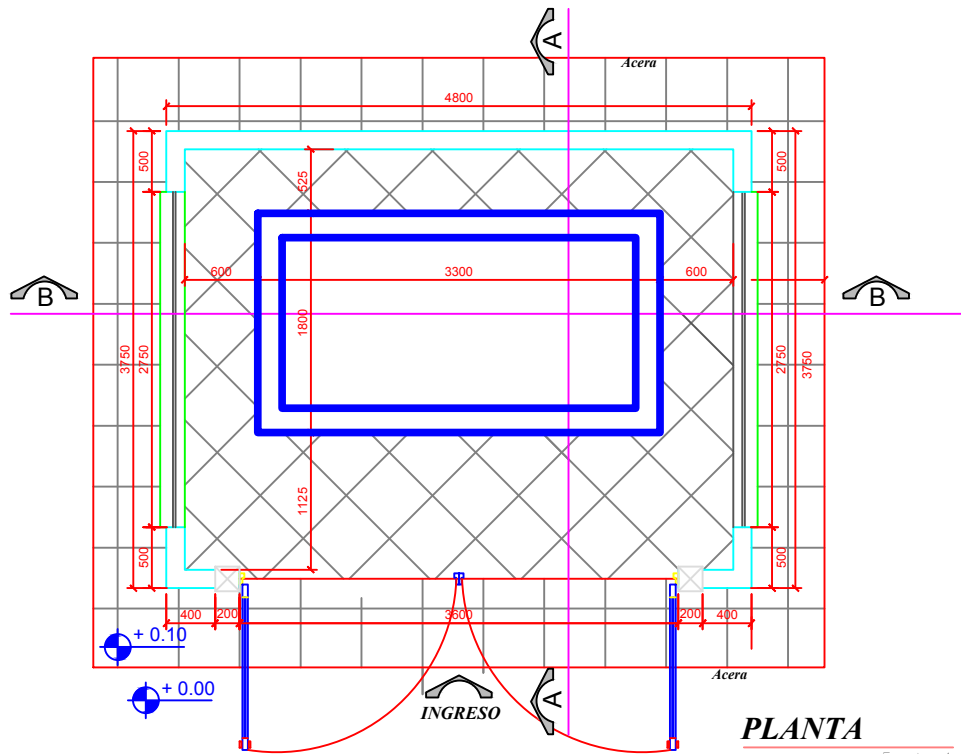


CASETA EDR - CIMENTOS (LOTE 2)



CIMENTOS

Escala: 1-50

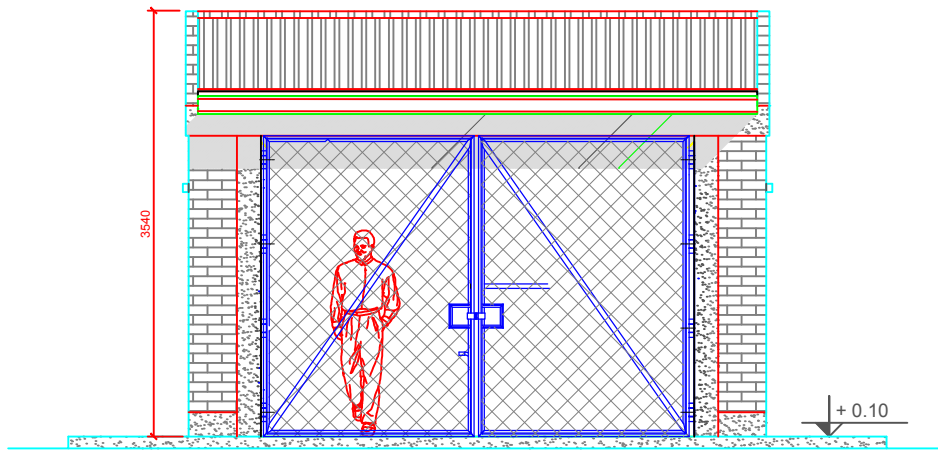


PLANTA

Escala: 1-50

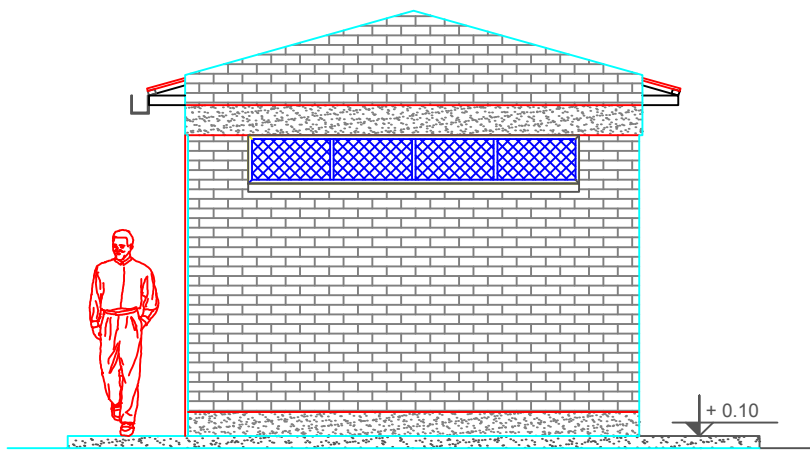


CASETA EDR - ELEVACION FRONTAL (LOTE 2)



ELEV. FRONTAL

Escala: 1-50



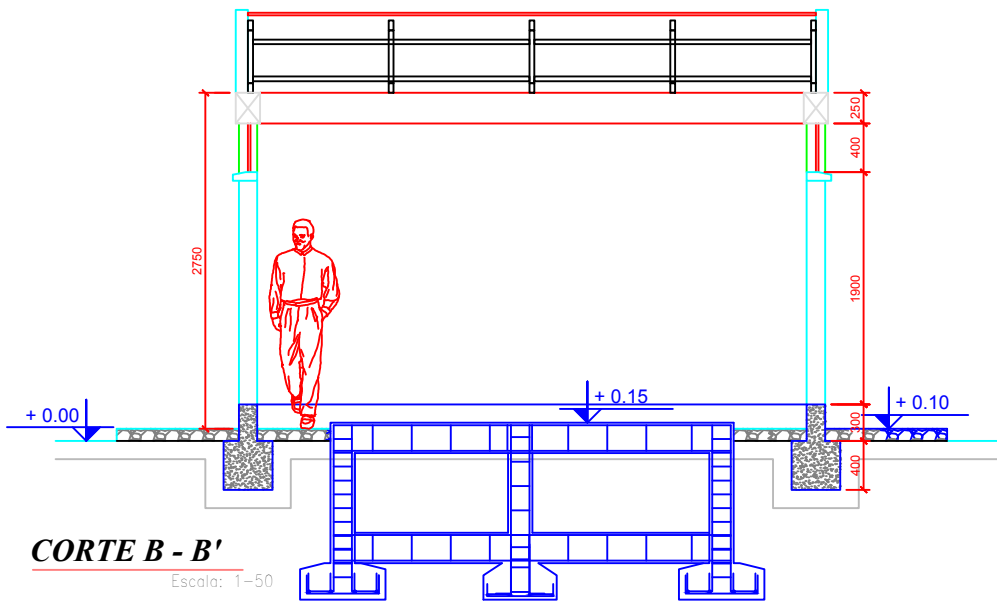
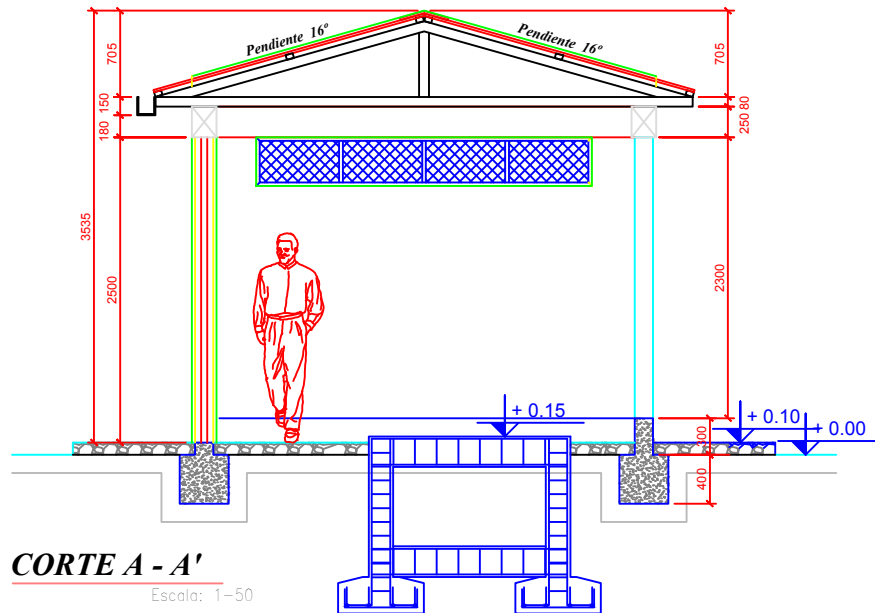
ELEV, LATERAL

Escala: 1-50



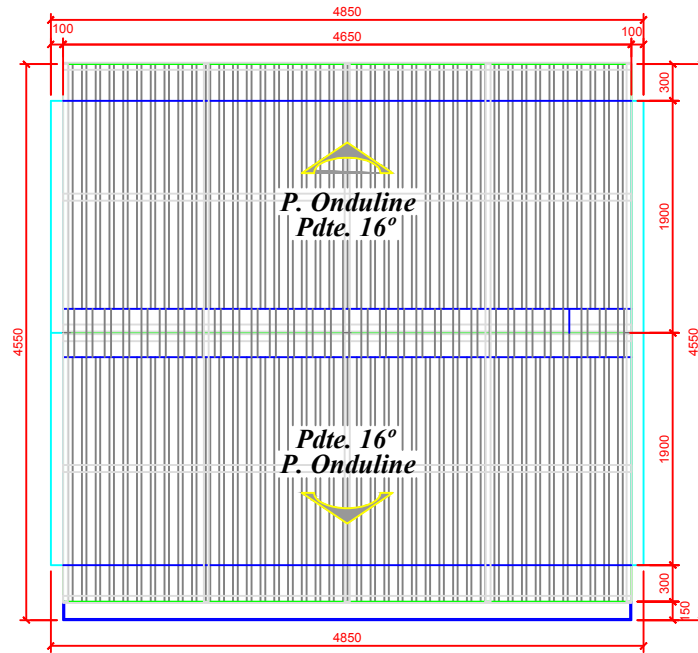
La fuerza que transforma Bolivia

CASETA EDR - CORTE LATERAL (LOTE 2)



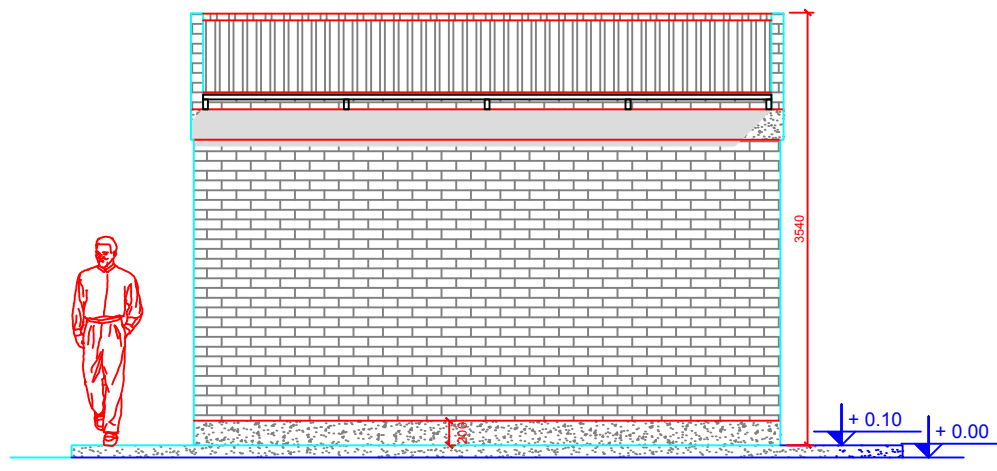


CASETA EDR - TECHOS Y ELEVACION POSTERIOR (LOTE 2)



TECHOS

Escala: 1-50



ELEV. POSTERIOR

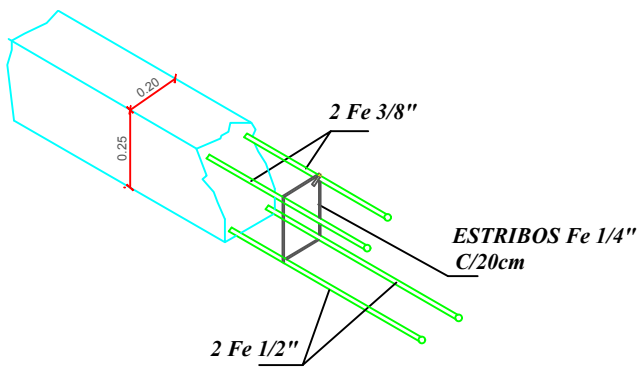
Escala: 1-50



CASETA EDR - DETALLE DE CADENA - BOTAAGUA - PORTON DE INGRESO (LOTE 2)

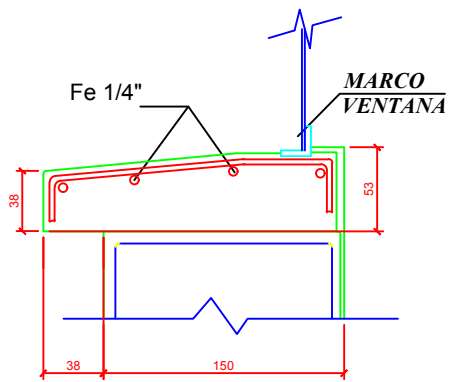
DETALLE VIGA CADENA

Escala: S/N



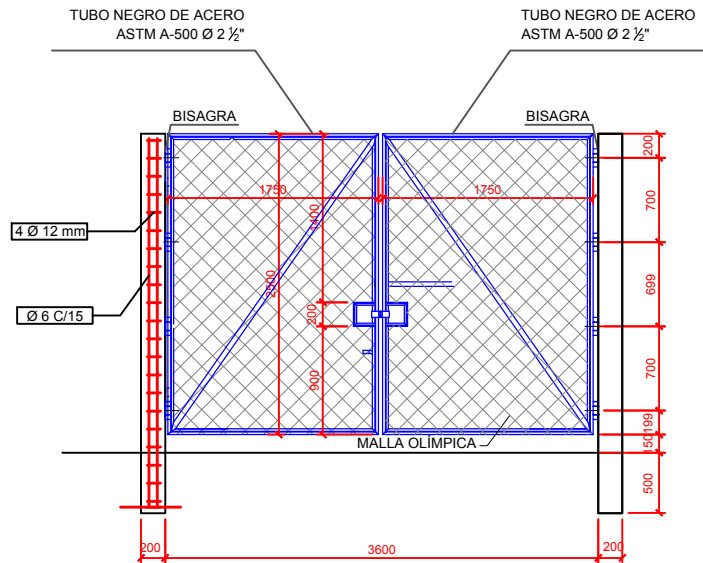
DETALLE BOTAGUAS

Escala: S/N



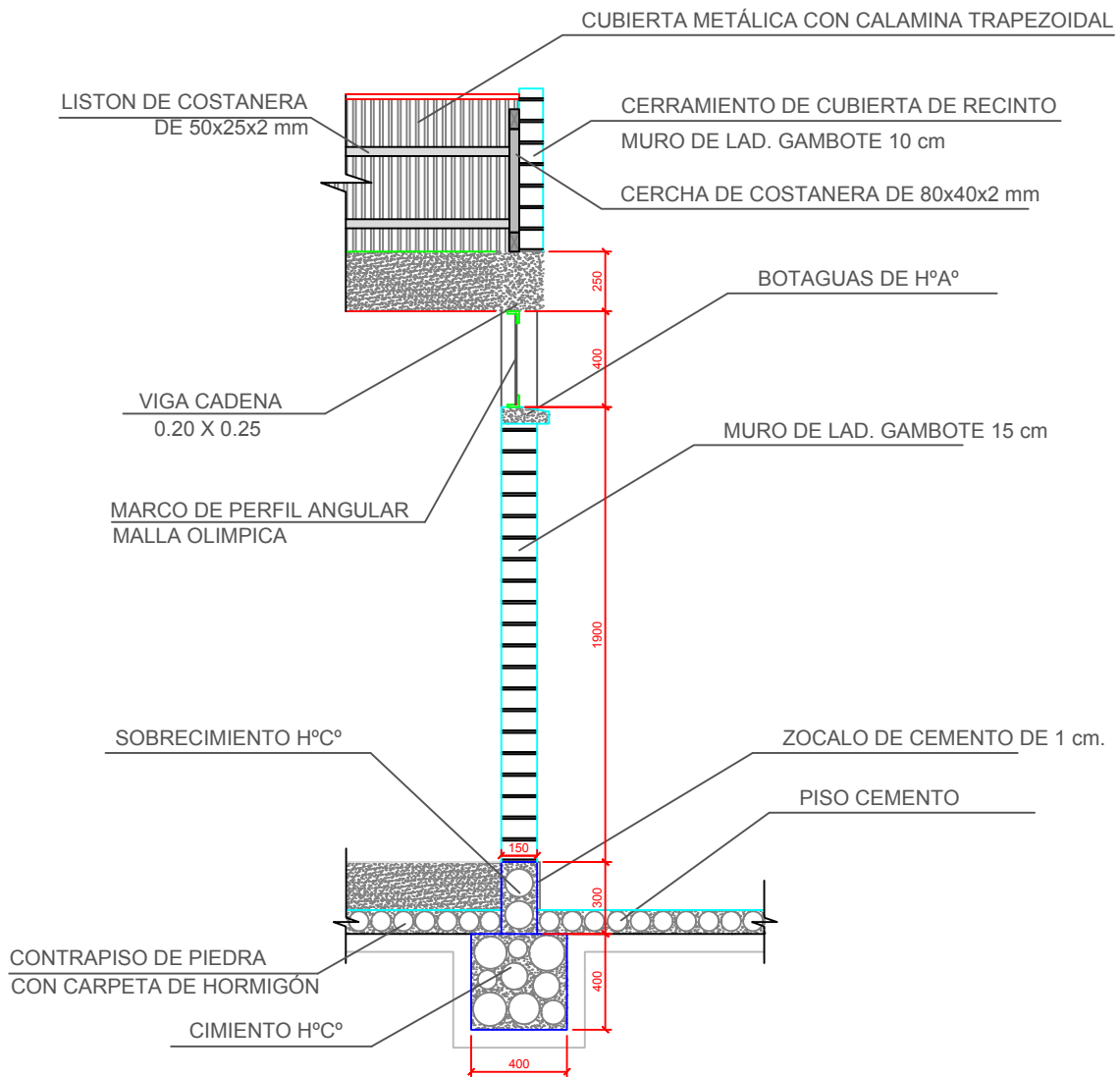
DETALLE PORTÓN DE INGRESO

Escala: S/N





CASETA EDR - DETALLES DE BORDE (LOTE 2)



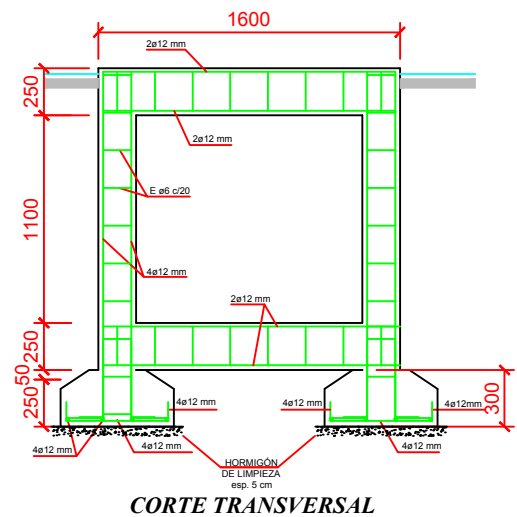
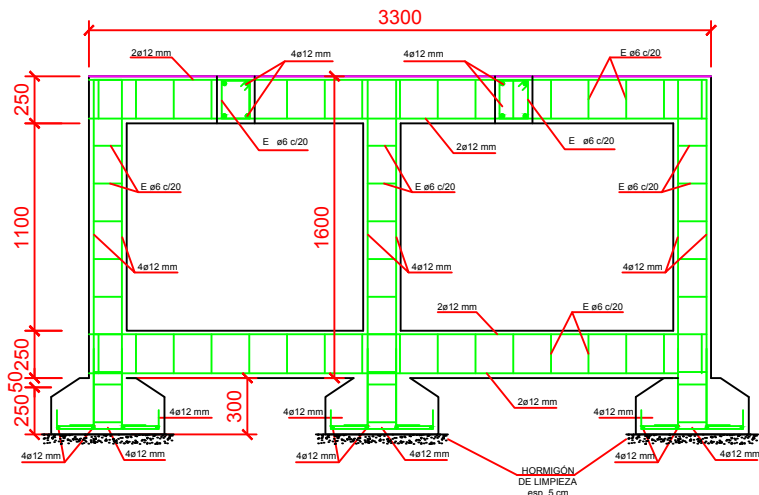
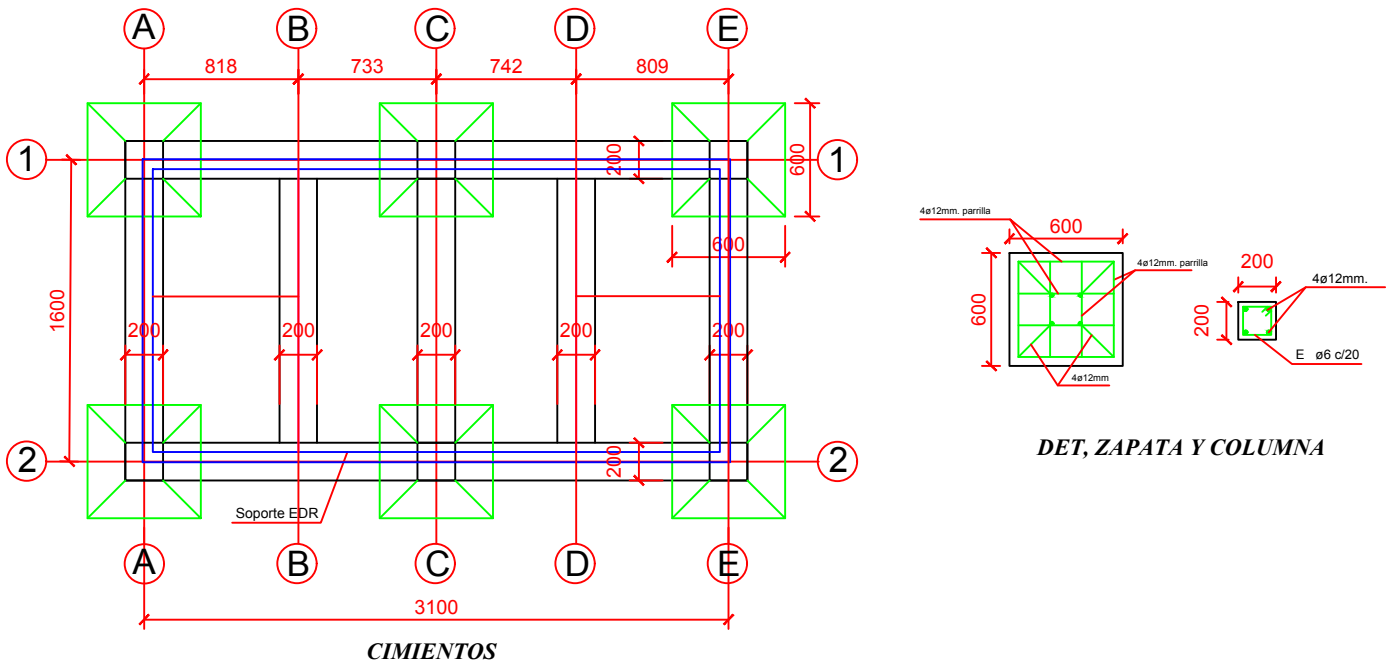
DETALLE DE BORDE

Escala: 1-25



CASETA EDR - DETALLES DE BASE PARA EDR DE 5000 M3H (LOTE 2)

**DETALLE BASE PARA EDR 5000 MCH
S/E**





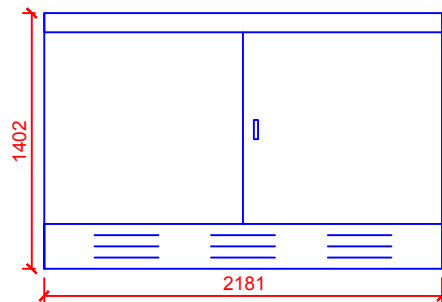
CASETA EDR - PLANILLA DE FIERROS Y VOL. DE HORMIGÓN (LOTE 2)

**PLANILLA DE FIERROS
BASE PARA EDR 5000 MCH**

POS.	ESQUEMA	Ø mm.	LONG. m.	CANT. Nº	LONG. TOTAL m.	PESO UNIT. Kg/m.	PESO TOTAL Kg/m.
ZAPATAS (0.60 x 0.60)							
MALLA		12	0.82	48	39.36		
COLUMNAS (0.20x0.20)							
fe LONGITUD		12	2.10	24	50.40		
ESTRIBOS		6	0.72	60	43.20		
VIGAS CORTAS (0.20x0.25)							
fe POSITIVO		12	1.93	16	30.88		
fe NEGATIVO		12	1.93	16	30.88		
ESTRIBOS		6	0.86	64	55.04		
VIGAS LARGAS (0.20x0.25)							
fe POSITIVO		12	3.63	8	29.04		
fe NEGATIVO		12	3.63	8	29.04		
ESTRIBOS		6	0.86	68	58.48		

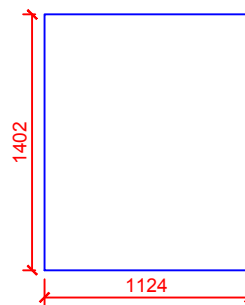
RESUMEN: Ø de 12 = 209.60 m + 10% = 230.56 m - 20 barras
Ø de 6 = 156.72 m + 10% = 172.40 m - 15 barras

VOL. DE HORMIGÓN ARMADO. REQUERIDO PARA LA BASE DEL EDR= 2.05 m3
VOL. DE HORMIGÓN DE LIMPIEZA REQUERIDO PARA LA BASE DEL EDR= 0.15 m3

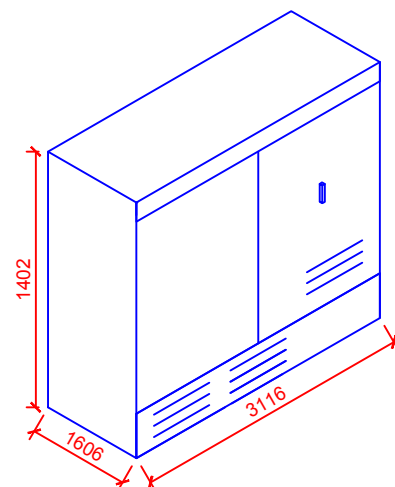


VISTA FRONTAL
GABINETE EDR 5000 MCH
S/E

NOTA : Las medidas son en metros



VISTA LATERAL IZQUIERDA
GABINETE EDR 5000 MCH
S/E



VISTA ISOMETRICA
GABINETE EDR 5000 MCH
S/E