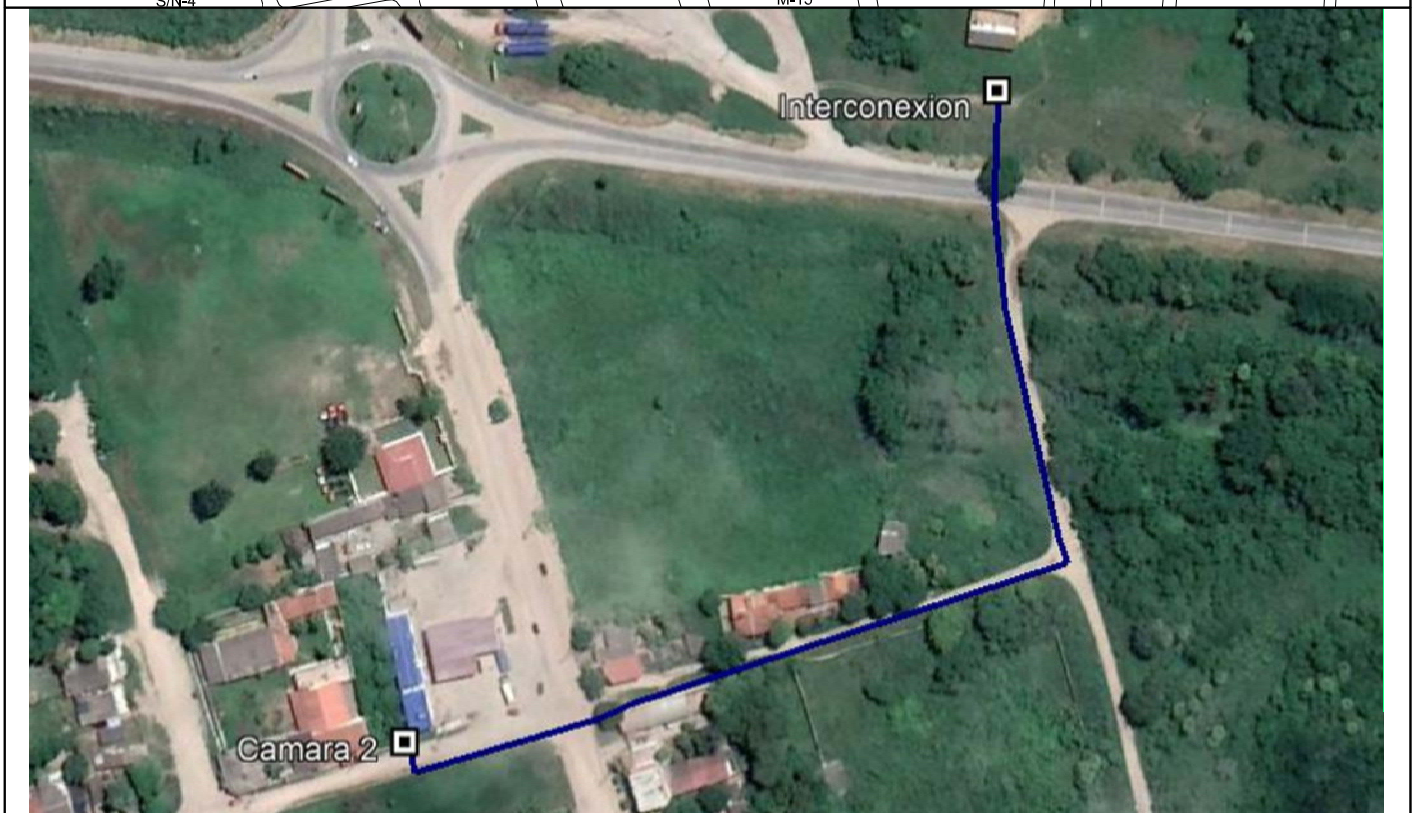
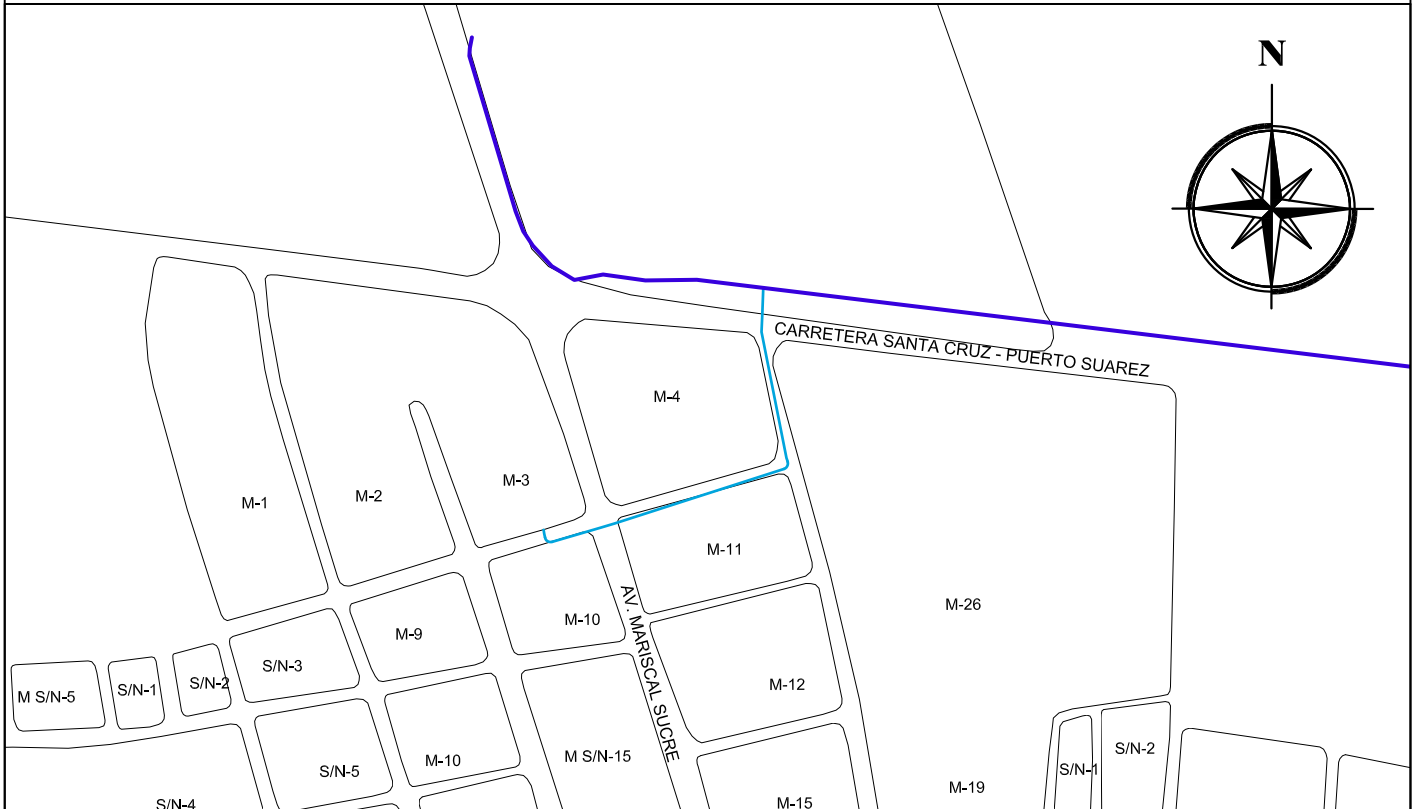


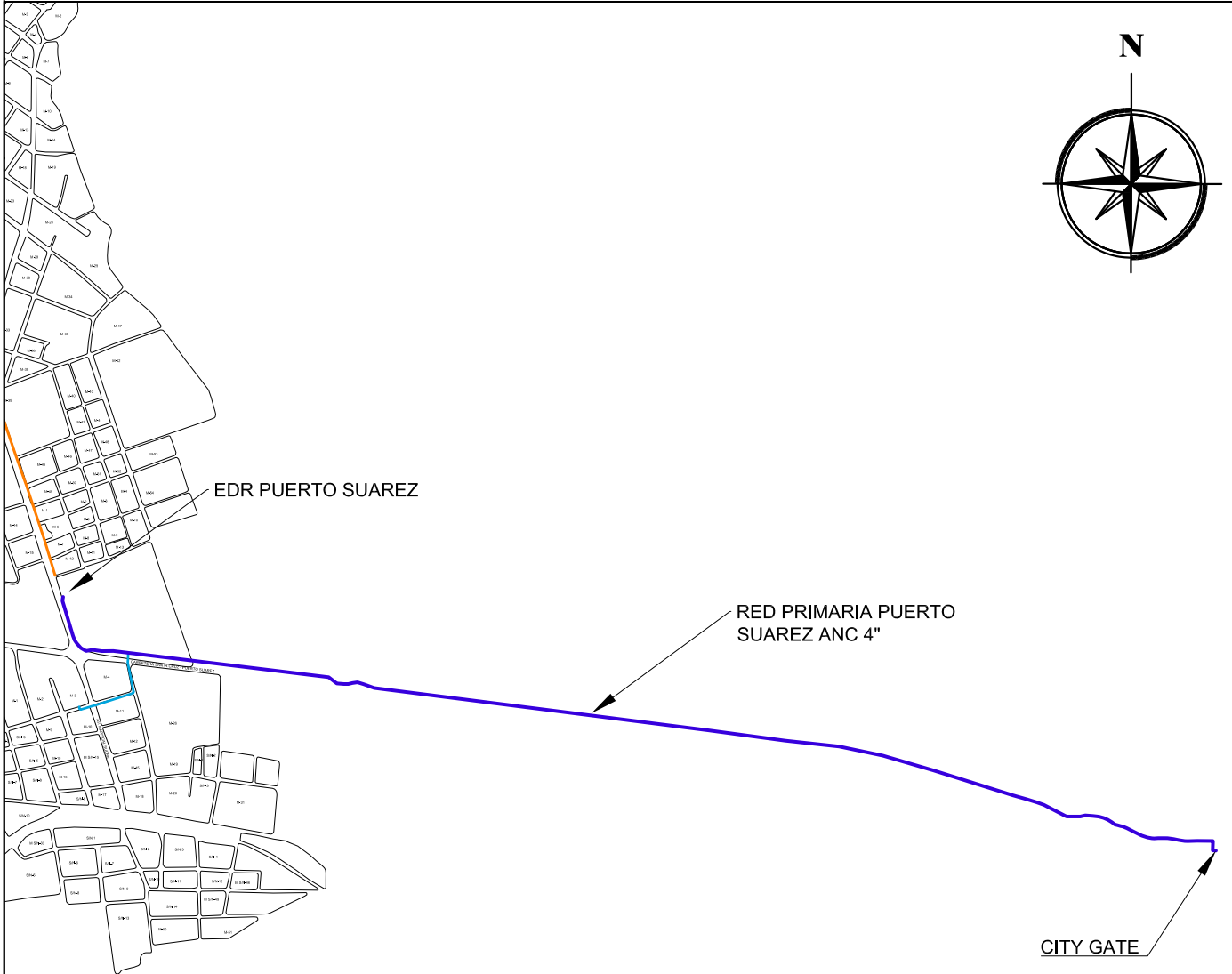
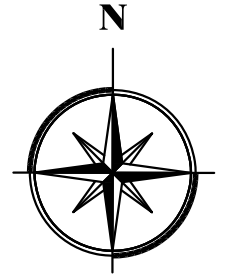


UBICACION



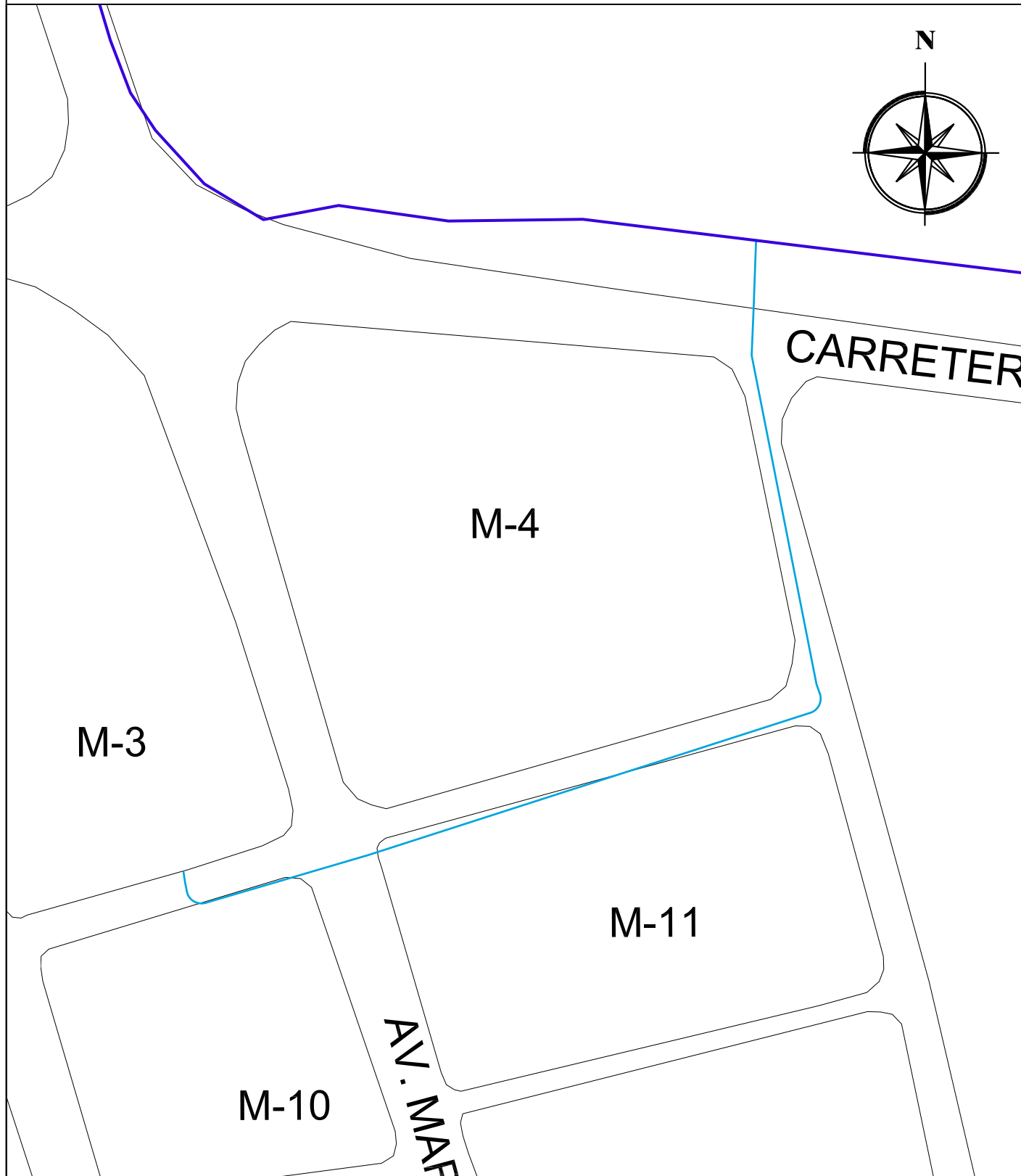
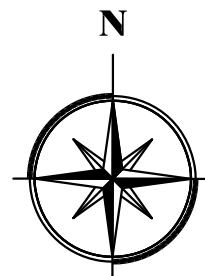


**RECERTIFICACION RED PRIMARIA
PUERTO SUAREZ DN 4"**



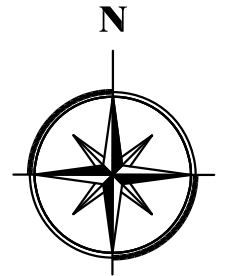


**AMPLIACION DE RED PRIMARIA
ANC 2" - PRUEBA HIDROSTATICA**





**UBICACION REFERENCIAL CAMARA
TRONQUERA RED PRIMARIA ANC 4"**



CAMARA DE VALVULA
TRONQUERA 4"

CARRE

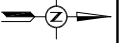
M-3

M-4

M-11

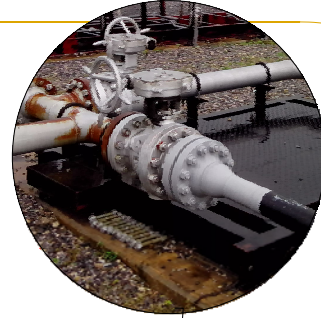


**UBICACION REFERENCIAL
VALVULA CITY GATE DE ANC 6"**

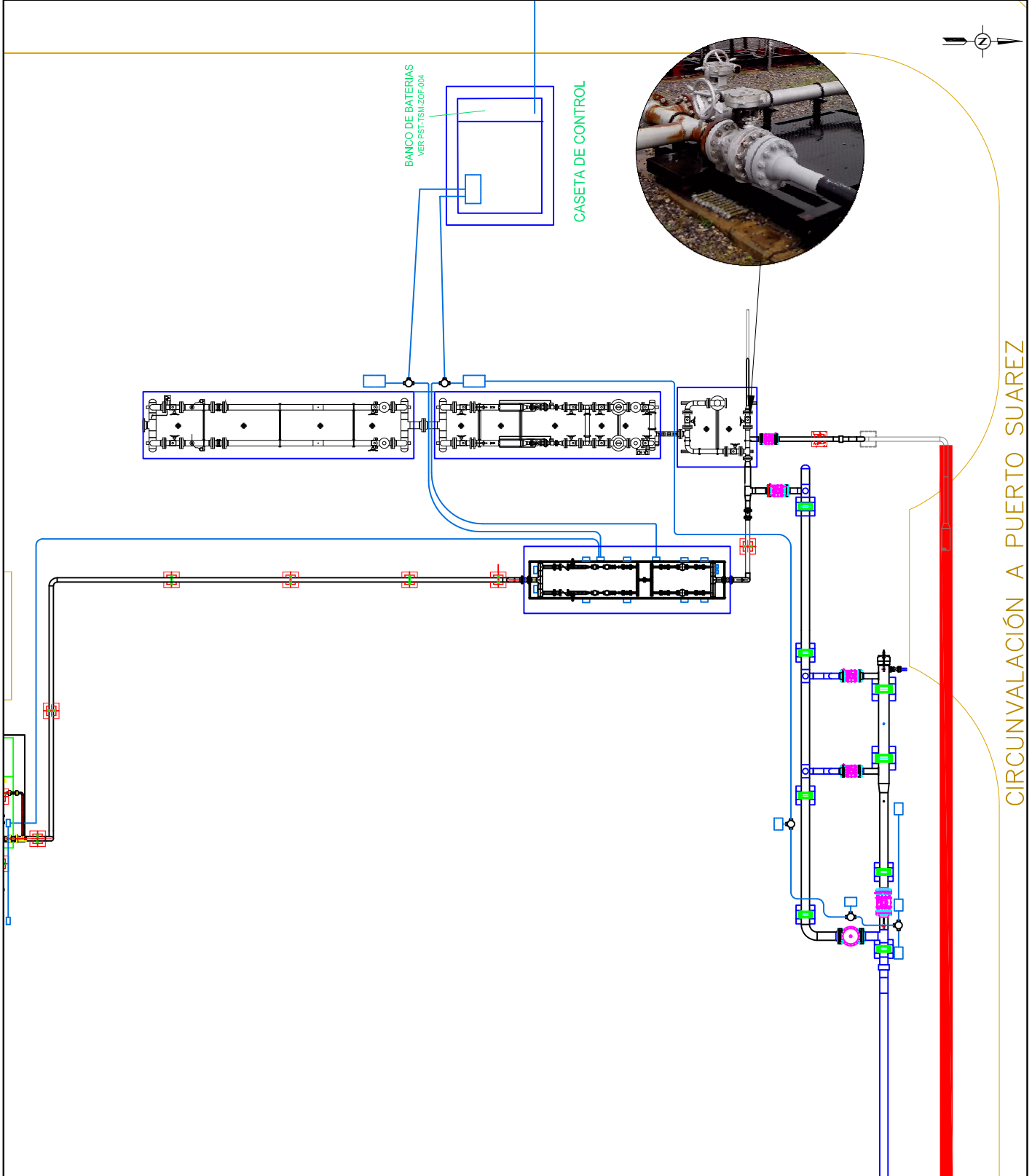


BANCO DE BATERIAS
VER PST-TSM-ZOF-004

CASETA DE CONTROL

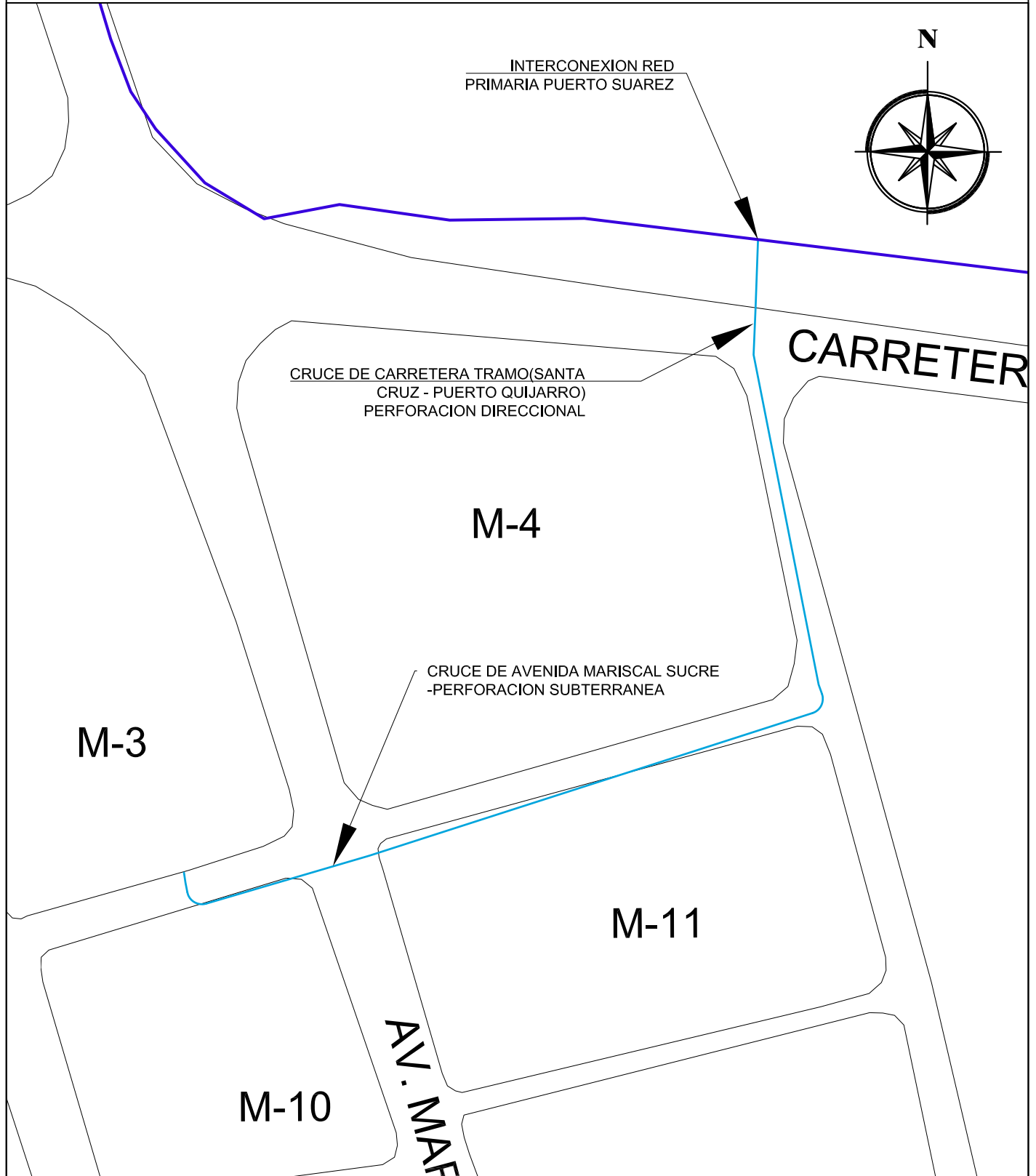


CIRCUNVALACIÓN A PUERTO SUAREZ



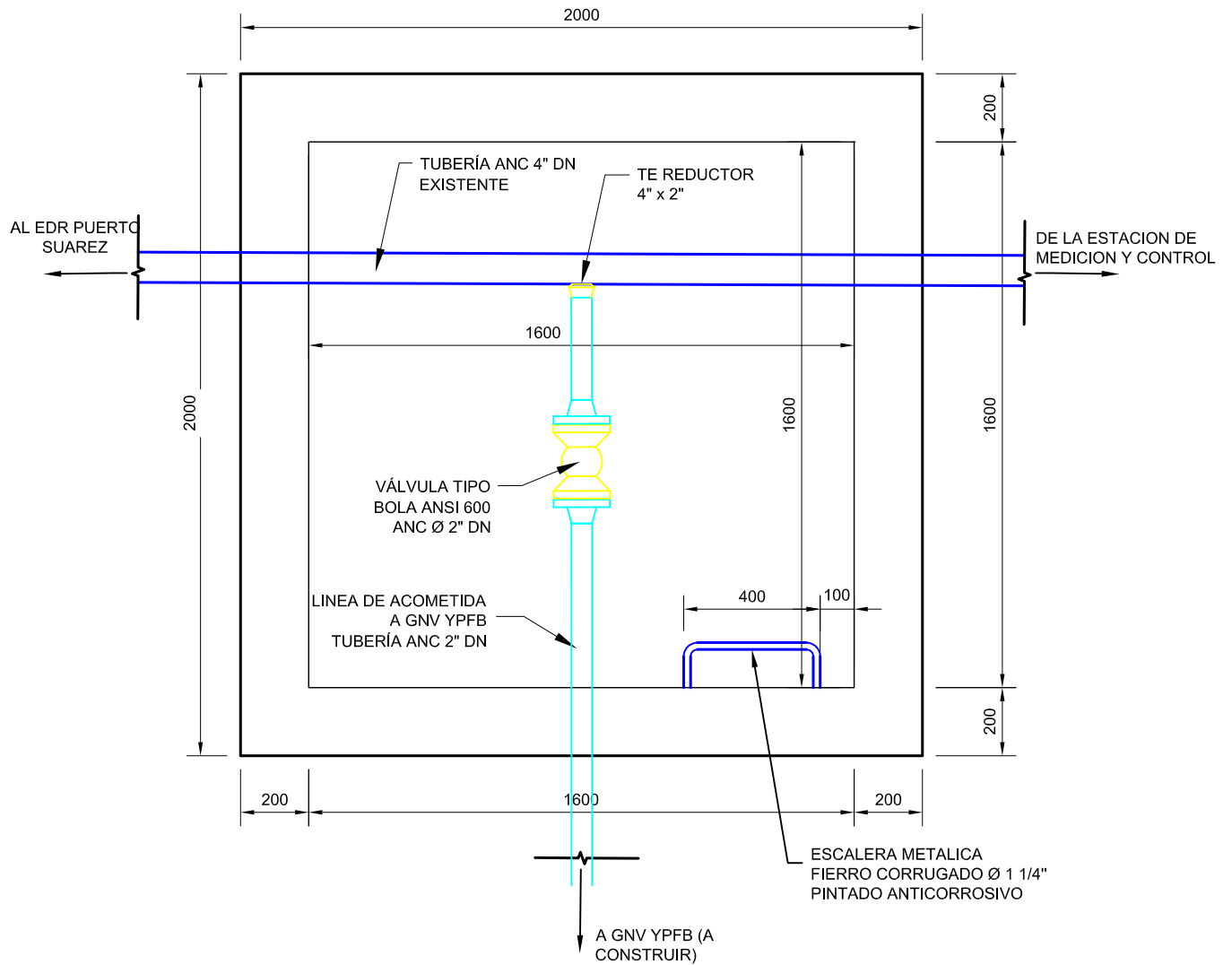


**AMPLIACION DE RED PRIMARIA
ANC 2"**





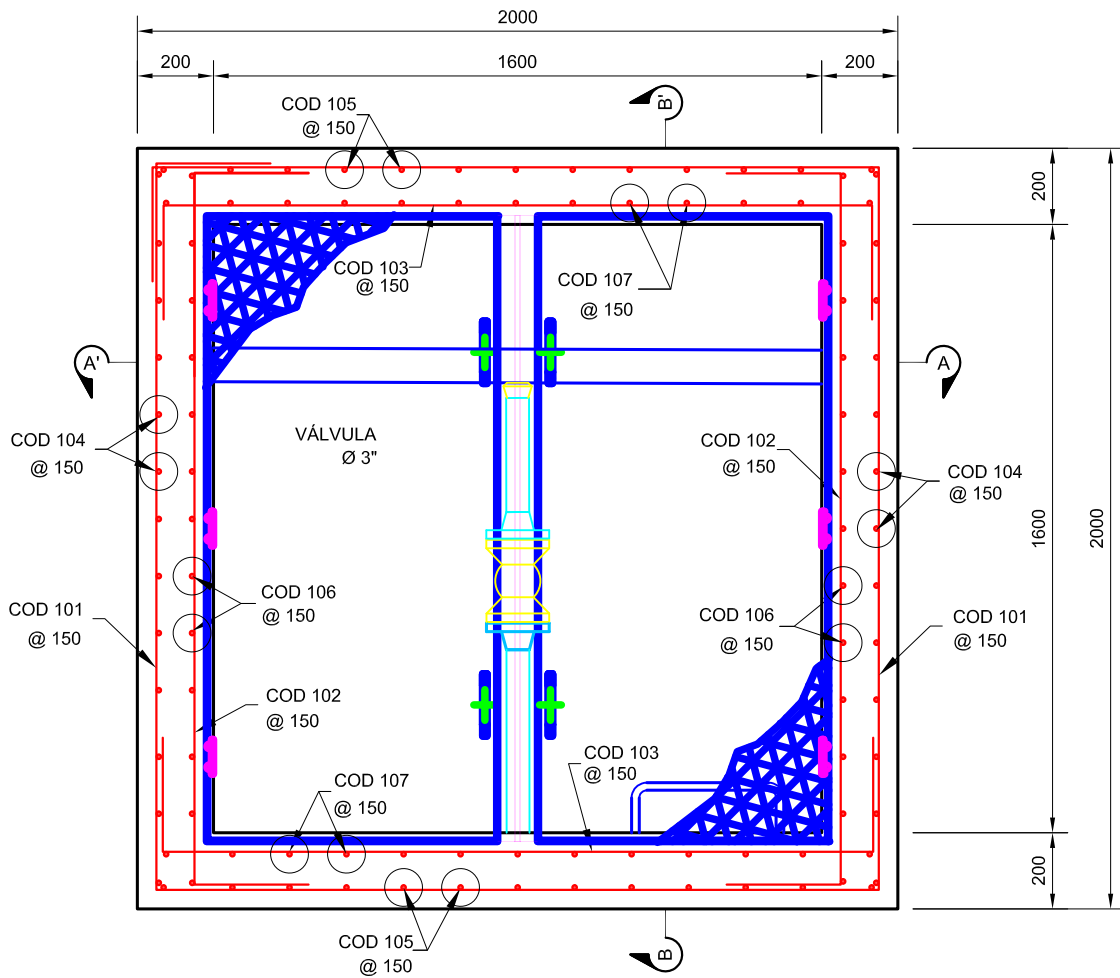
CAMARA DE DERIVACION 4" x 2"



VISTA EN PLANTA
(ESCALA 1:20)



CAMARA DE DERIVACION 4" x 2"

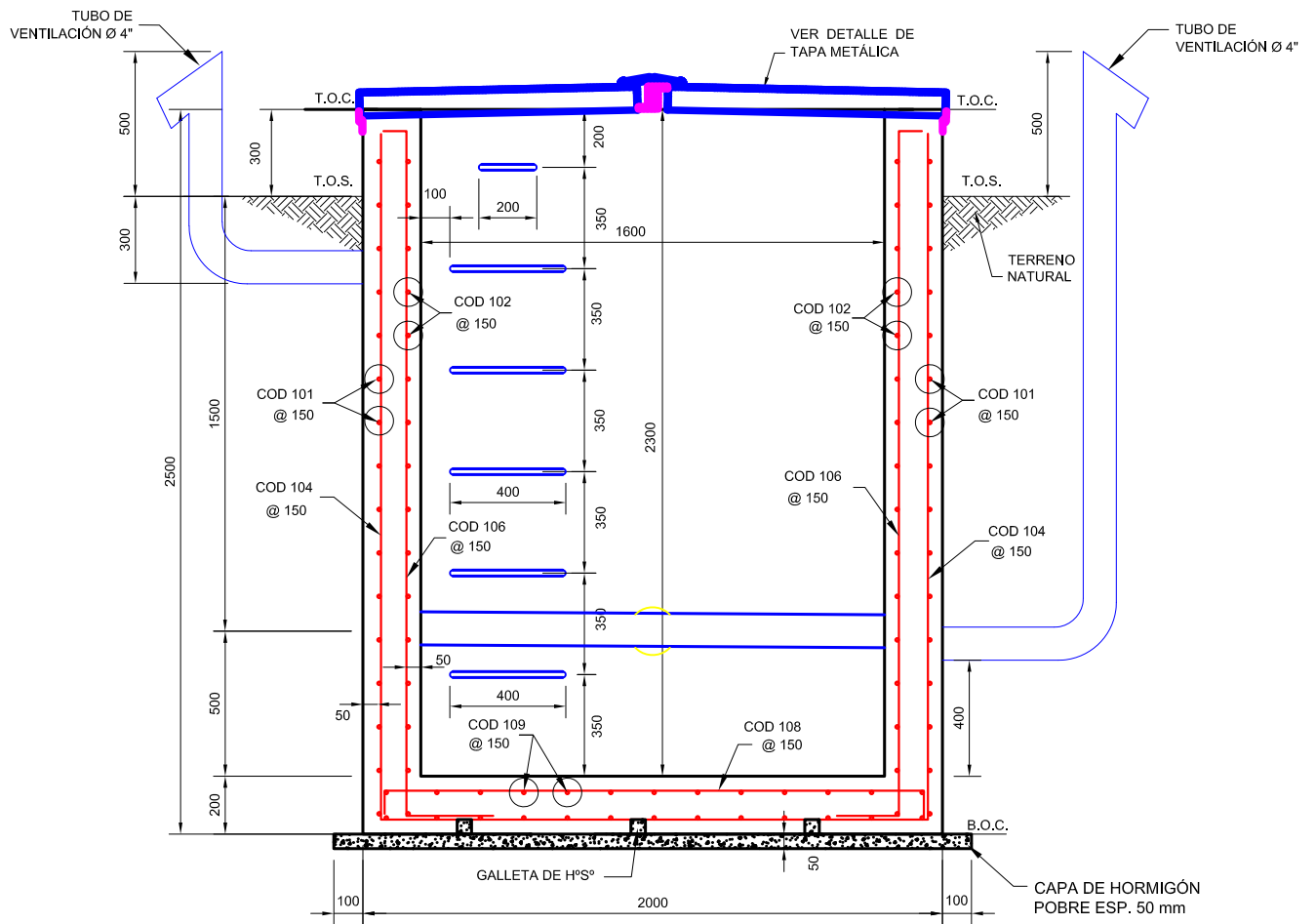


DETALLE DE LA ARMADURA DE REFUERZO

(ESCALA 1:20)



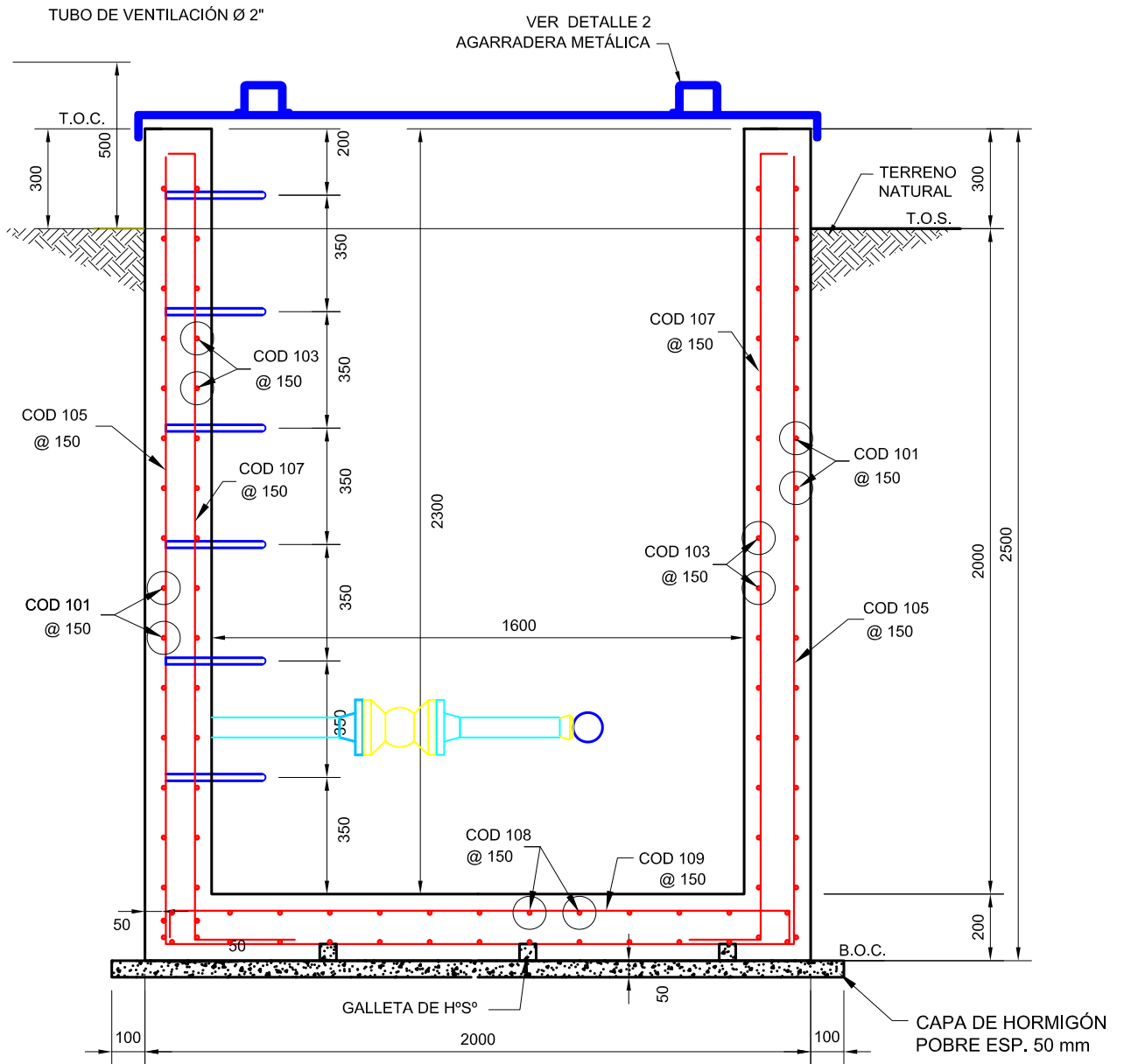
CAMARA DE DERIVACION 4" x 2"



SECCIÓN A-A'
(ESCALA 1:20)



CAMARA DE DERIVACION 4" x 2"

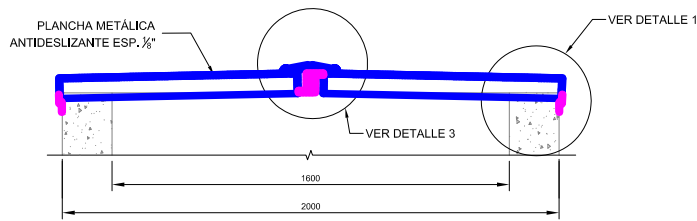


SECCIÓN B-B'

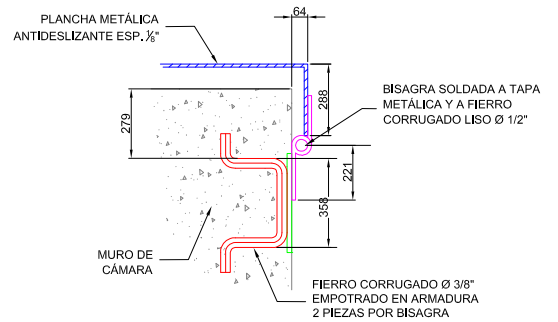
(ESCALA 1:20)



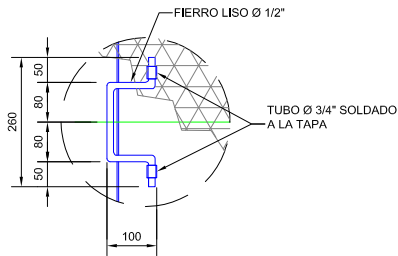
CAMARA DE DERIVACION 4" x 2"



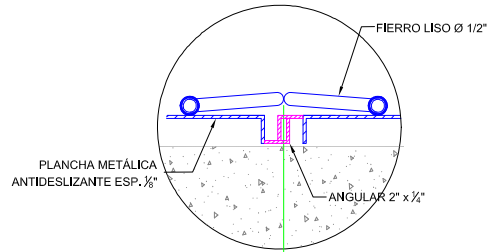
CORTE TAPA METÁICA
(ESCALA 1:20)



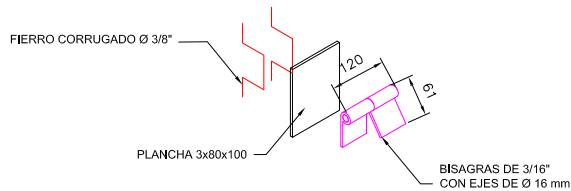
DETALLE 1
(ESCALA 1:5)



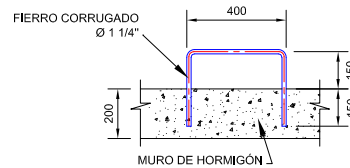
DETALLE 2
(ESCALA 1:10)



DETALLE 3
(ESCALA 1:5)



DETALLE DE ENSAMBLAJE DE BISAGRAS
(SIN ESCALA)



DETALLE DE PELDAÑO
(ESCALA 1:20)



CAMARA DE DERIVACION 4" x 2"

PLANILLA DE FIERROS												
ACERO				DOBLADO							COMENTARIOS	
CODIGO	No.PIEZAS	DIÁMETRO	LONG.	TIPO	A	B	C	D	E	F	G	
101	17	8 mm (5/16")	8200	4	300	1900	1900	1900	1900	300		
102	34	8 mm (5/16")	2460	3	300	1860	300					
103	34	8 mm (5/16")	2460	3	300	1860	300					
104	14	10 mm (3/8")	6680	3	2400	1880	2400					
105	14	10 mm (3/8")	6680	3	2400	1880	2400					
106	28	10 mm (3/8")	2780	6	100	2380	300					
107	28	10 mm (3/8")	2780	6	100	2380	300					
108	14	10 mm (3/8")	2060	3	100	1860	100					
109	14	10 mm (3/8")	2060	3	100	1860	100					

NOTAS.-

1. TODOS LOS CODIGOS SON PARA ESTE PLANO
2. VERIFICAR LAS DIMENSIONES ANTES DE SU CONSTRUCCION
3. CANTIDADES MOSTRADAS SON PARA UNA PIEZA.
4. ABBREVIACIONES:
 T.O.C. NIVEL SUPERIOR DEL HORMIGÓN
 T.O.S. NIVEL SUPERIOR DEL SUELO
 B.O.C. NIVEL INFERIOR DEL HORMIGÓN

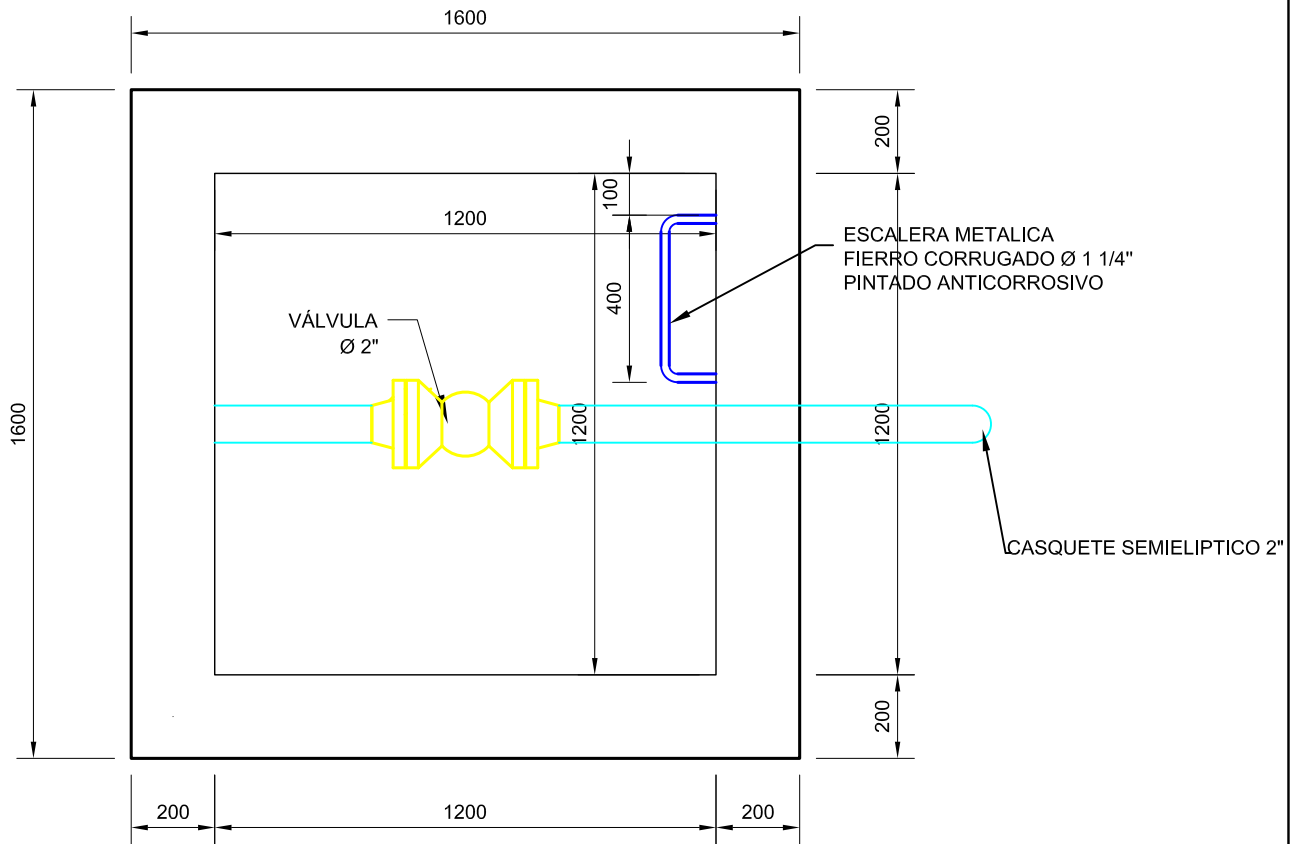
VOL. DE H°. A°. REQUERIDO PARA CÁMARA = 4.11 m3

VOL. DE H°. P°. REQUERIDO PARA CÁMARA = 0.24 m3



CAMARA DE BLOQUEO 2"

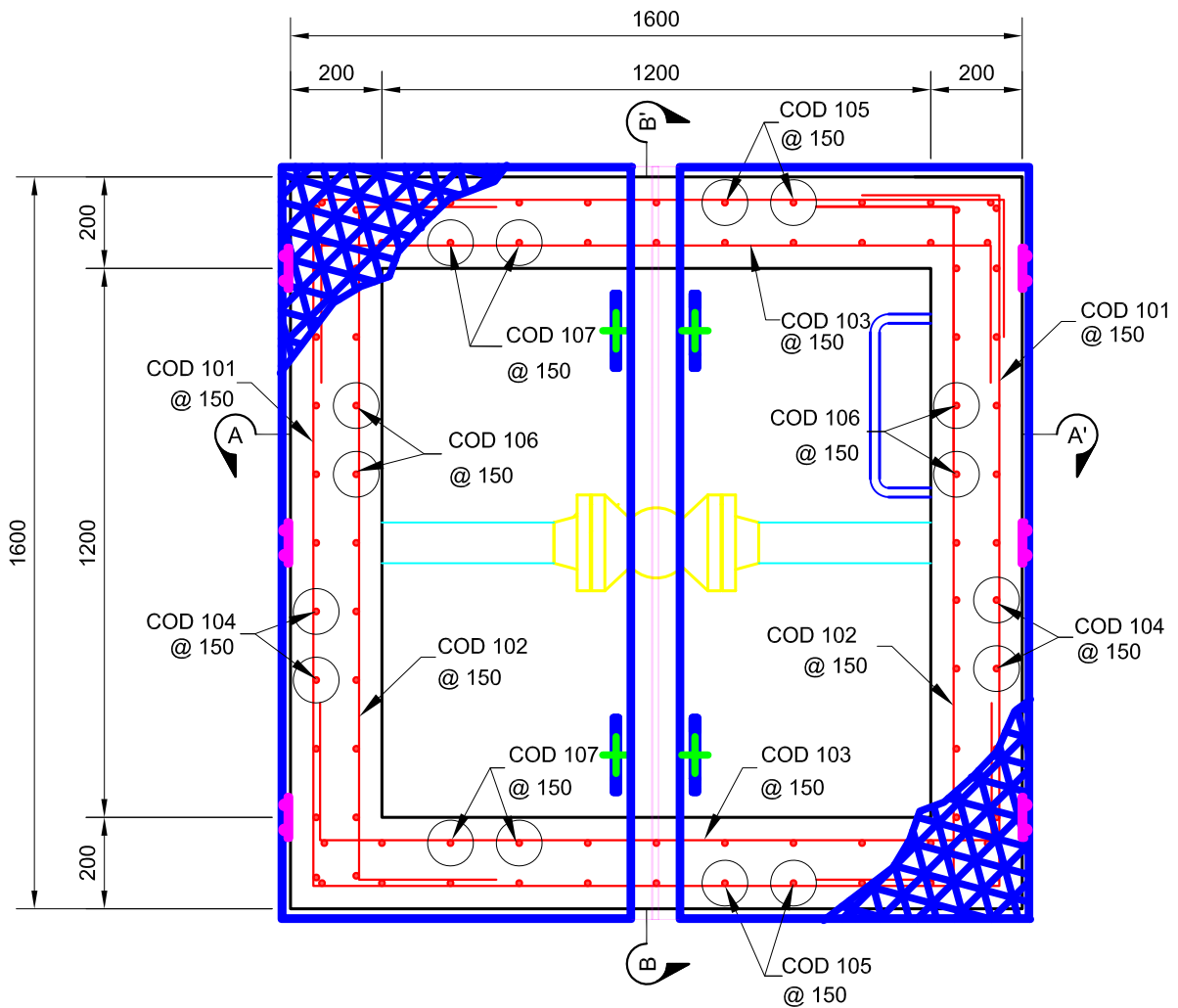
VISTA EN PLANTA



(ESCALA 1:20)



CAMARA DE BLOQUEO 2"

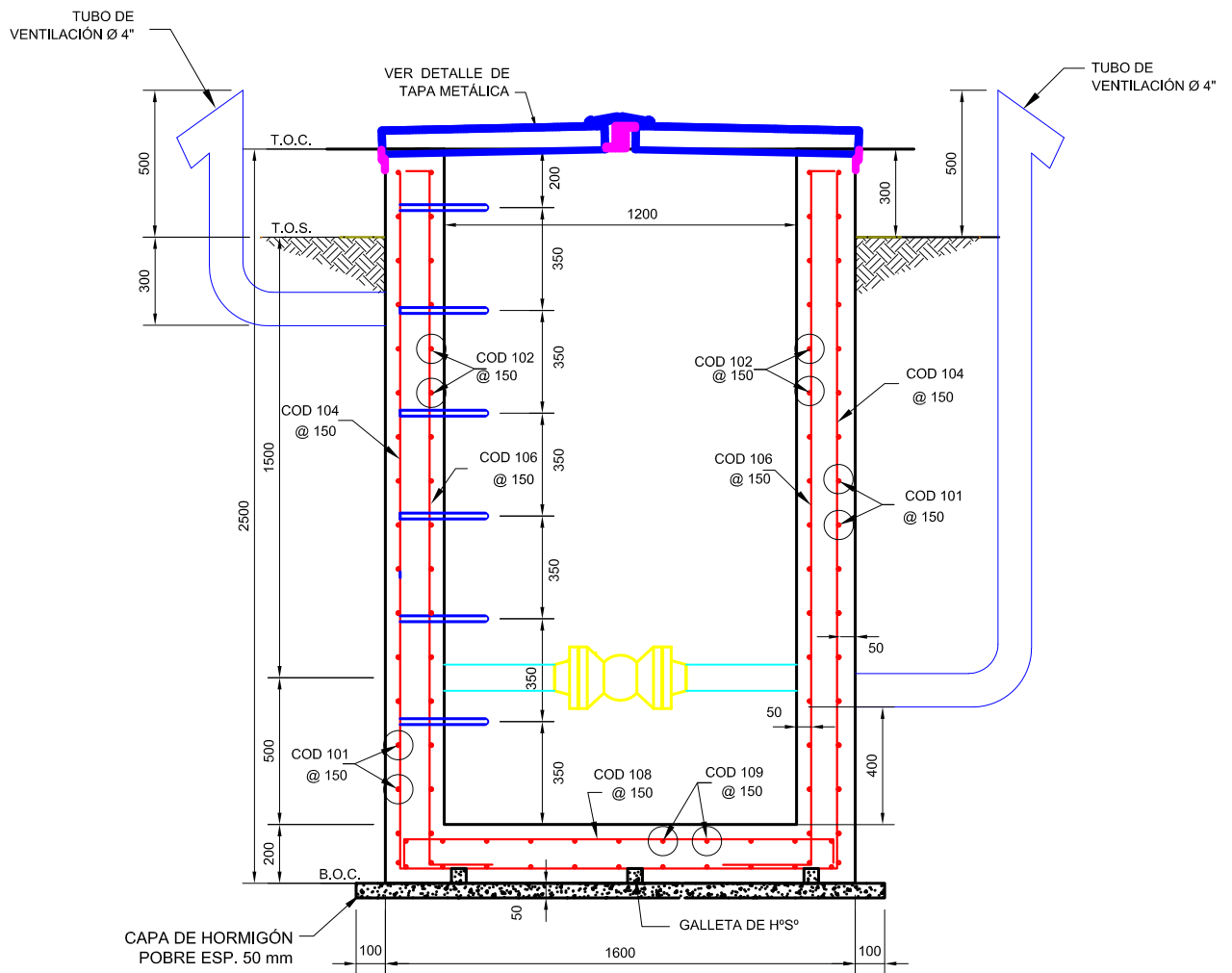


DETALLE DE LA ARMADURA DE REFUERZO

(ESCALA 1:20)



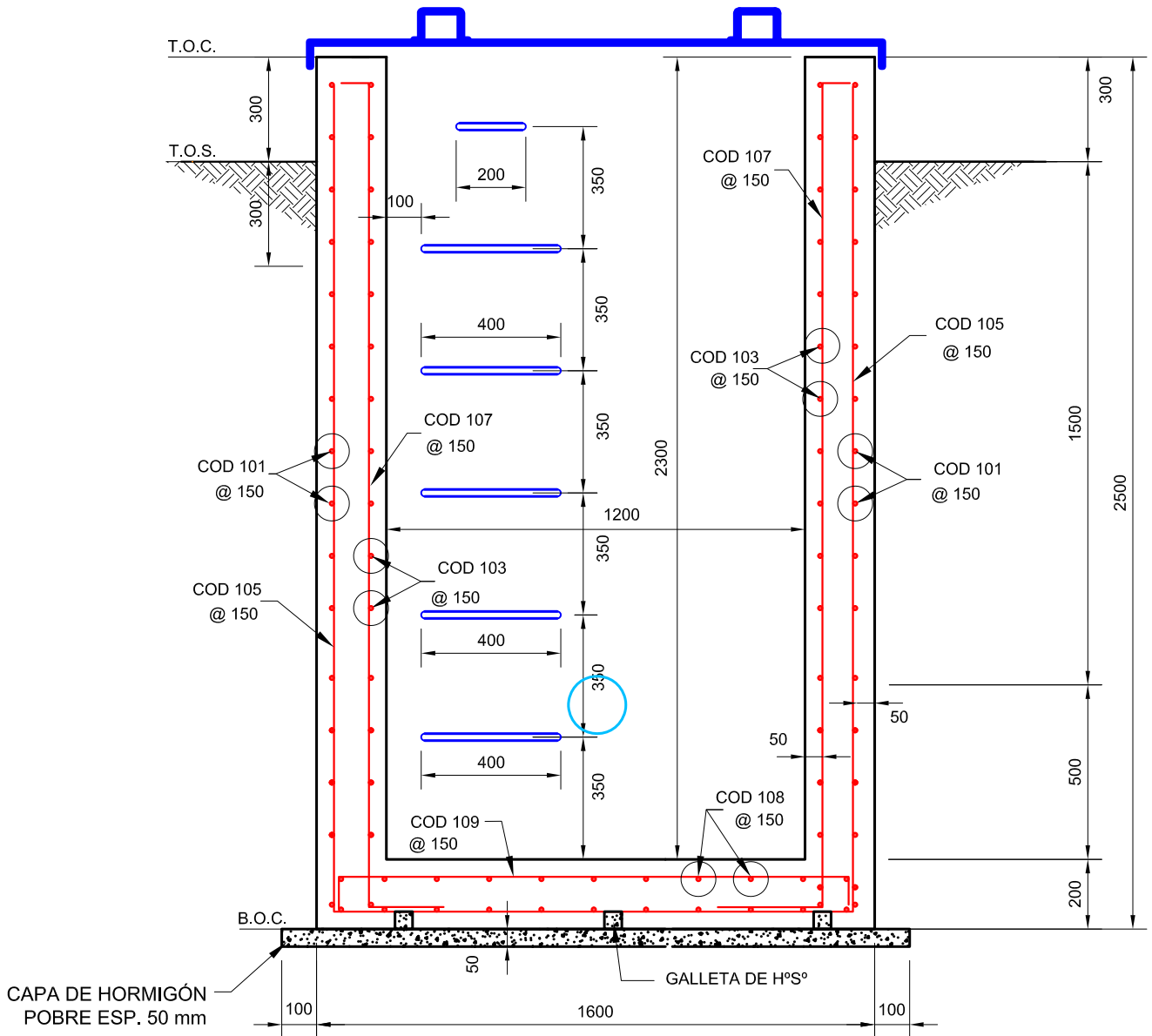
CAMARA DE BLOQUEO 2"



SECCIÓN A-A'
(ESCALA 1:20)



CAMARA DE BLOQUEO 2"

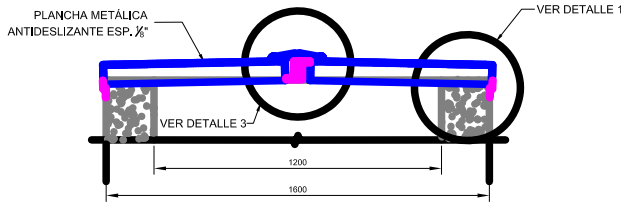


SECCIÓN B-B'

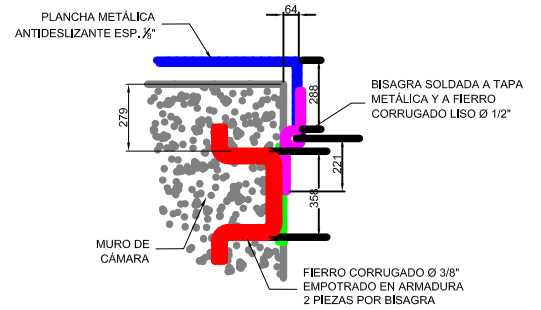
(ESCALA 1:20)



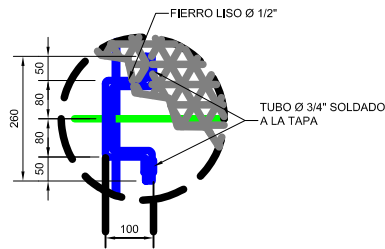
CAMARA DE BLOQUEO 2"



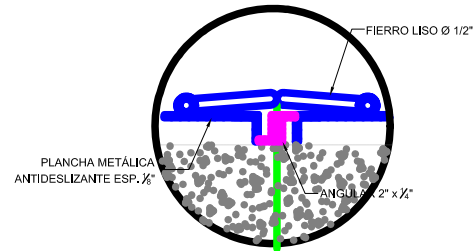
CORTE TAPA METÁLICA
(ESCALA 1:20)



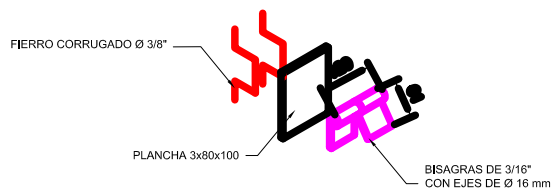
DETALLE 1
(ESCALA 1:5)



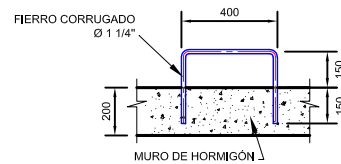
DETALLE 2
(ESCALA 1:10)



DETALLE 3
(ESCALA 1:5)



DETALLE DE ENSAMBLAJE DE BISAGRAS
(SIN ESCALA)



DETALLE DE PELDAÑO
(ESCALA 1:20)



CAMARA DE BLOQUEO 2"

PLANILLA DE FIERROS												
ACERO				DOBLADO								COMENTARIOS
CODIGO	No.PIEZAS	DIÁMETRO	LONG.	TIPO	A	B	C	D	E	F	G	
101	17	8 mm (5/16")	6600	4	300	1500	1500	1500	1500	300		
102	34	8 mm (5/16")	2060	3	300	1460	300					
103	34	8 mm (5/16")	2060	3	300	1460	300					
104	11	10 mm (3/8")	6280	3	2400	1480	2400					
105	11	10 mm (3/8")	6280	3	2400	1480	2400					
106	22	10 mm (3/8")	2780	6	100	2380	300					
107	22	10 mm (3/8")	2780	6	100	2380	300					
108	11	10 mm (3/8")	1660	3	100	1460	100					
109	11	10 mm (3/8")	1660	3	100	1460	100					

- NOTAS.-
 1. TODOS LOS CODIGOS SON PARA ESTE PLANO
 2. VERIFICAR LAS DIMENSIONES ANTES DE SU CONSTRUCCION
 3. CANTIDADES MOSTRADAS SON PARA UNA PIEZA.
 4. ABREVIACIONES:
 T.O.C. NIVEL SUPERIOR DEL HORMIGÓN
 T.O.S. NIVEL SUPERIOR DEL SUELO
 B.O.C. NIVEL INFERIOR DEL HORMIGÓN

VOL. DE H°. A°. REQUERIDO PARA CÁMARA = 3.09 m3
 VOL. DE H°. P°. REQUERIDO PARA CÁMARA = 0.16 m3